

*Laney-Walker Harrisburg Choice Neighborhood*

# COMMUNITY MEETING

November 3 + 5, 2022



# Agenda

**1** **Welcome & What is CNI?**  
*5-10 minutes*

**2** **Survey says ...**  
*20-30 minutes*

**3** **Time to hear from you!**  
*60 minutes*

01

WHAT IS CNI?



# WHY ARE WE HERE?

## WHAT IS THE CHOICE NEIGHBORHOODS INITIATIVE (CNI)?

- + Sponsored by the U.S. Department of Housing and Urban Development (HUD), CNI focuses on neighborhood revitalization centered around a public housing site in need of renovation or replacement.
- + It presents an opportunity to bring together residents with city and local stakeholders to create a shared vision for the future during a 2-year planning process.



# OUR NEIGHBORHOOD.

The Choice Neighborhoods Initiative is a place-based approach to neighborhood revitalization is the successor to HOPE VI.

## KEY DISTINGUISHERS:

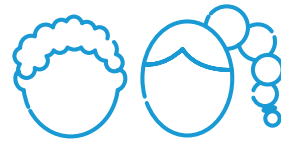
- + **CNI focuses on transforming entire neighborhoods** with three goals/plans: Housing, People, and Neighborhood
- + **One-for-one replacement:** For any unit of housing removed (at Allen Homes) a new unit must be re-built.
- + **Right to Return for Tenants:** Each tenant who wishes to return may do so if they are in good-standing / lease-compliant.

## CNI FOCUSES ON THREE AREAS:



### **HOUSING**

Developing high quality mixed-income housing that is well-managed and responds to the needs of Allen Homes residents and the surrounding neighborhoods.



### **PEOPLE**

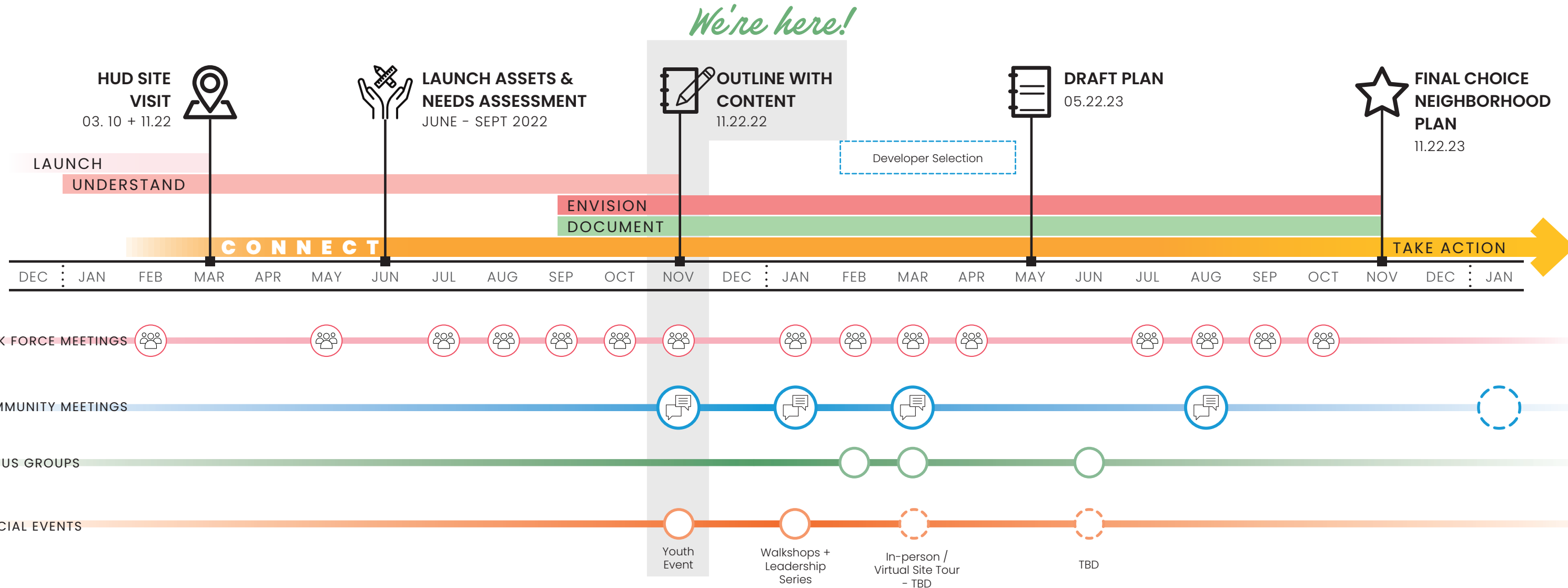
Improving the quality of life for Allen Homes residents and Laney Walker-Harrisburg residents related to employment, income, health, and children's education.



### **NEIGHBORHOOD**

Creating conditions to build on and improve the amenities and assets (including safety, good schools, and commercial activity) to better serve the residents of Allen Homes and Laney Walker-Harrisburg neighborhood.

# WHERE WE ARE IN THE PROCESS.



# HOW YOU CAN PARTICIPATE.



## JOIN A TASK FORCE!

The Housing, People, and Neighborhood task forces meet every month to develop the plan goals and strategies. This is the best way for you to take a seat at the table and be a part of the decision making process for what is happening in your neighborhood.

**WHEN: Monthly Meetings**  
*(virtual or in-person)*

Sign up today to receive an invite to receive an email invitation to the next Task Force meeting!



## COME TO COMMUNITY MEETINGS!

Keep coming to meetings like this. We'll be hosting many of these over the next year to get your feedback on what you want to see happen in the future.

**WHEN: Several meetings are planning over the next year.**

Be on the lookout for more information about them closer to the meetings.



## COME TO LEADERSHIP SERIES EVENTS!

We'll be hosting an educational series of talks about how planning and community development take place in Augusta with hands-on activities to explore how you can be more involved in your community.

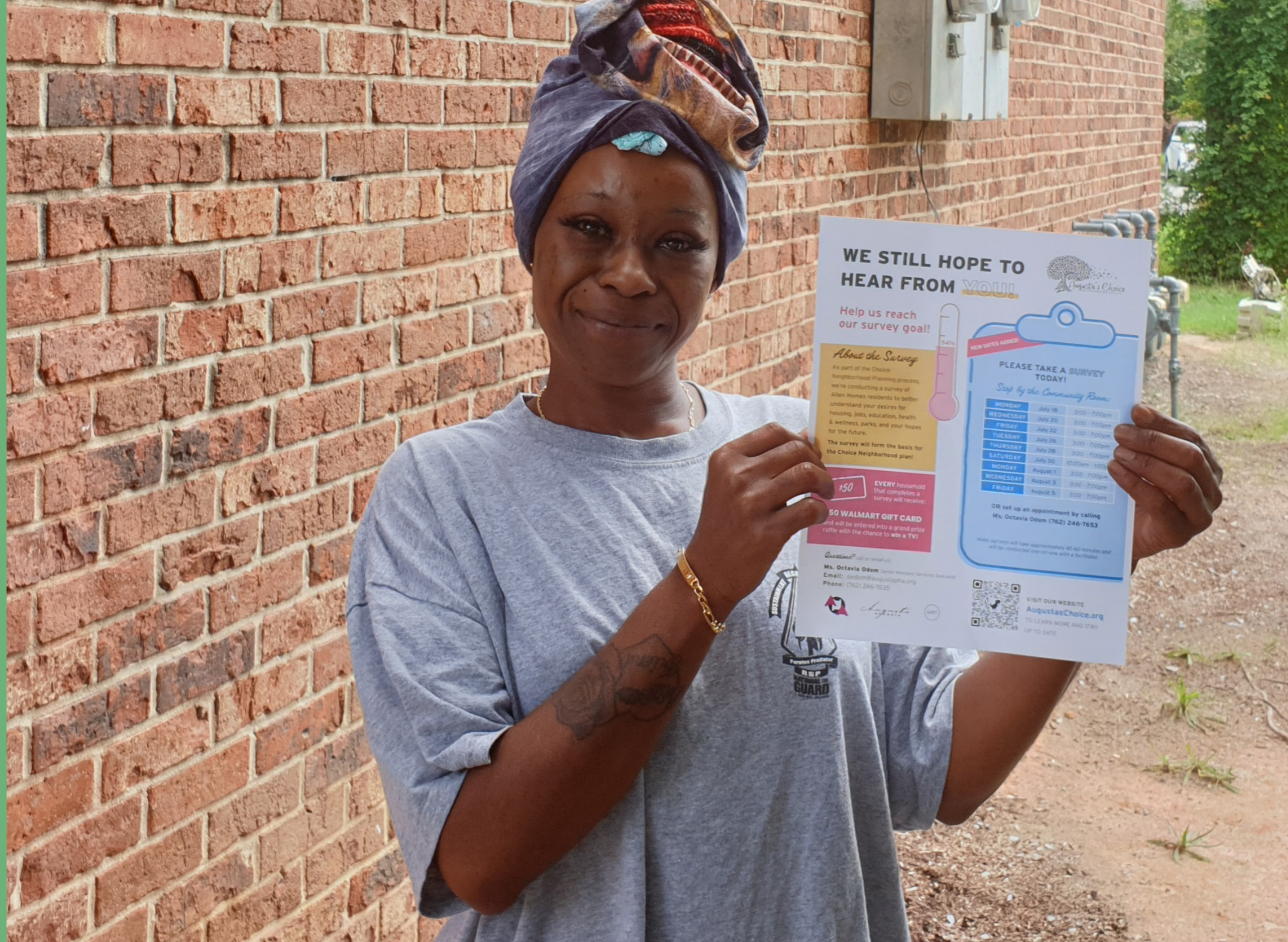
**WHEN: January-February 2023**

Be on the lookout for more information about when and where these talks will be.

**STAY UP TO DATE BY VISITING: [AUGUSTASCHOICE.ORG](https://augustaschoice.org)**

02

SURVEY  
FINDINGS





# ASSETS & NEEDS ASSESSMENT SURVEY.

*Thank you for taking the  
time to respond!*

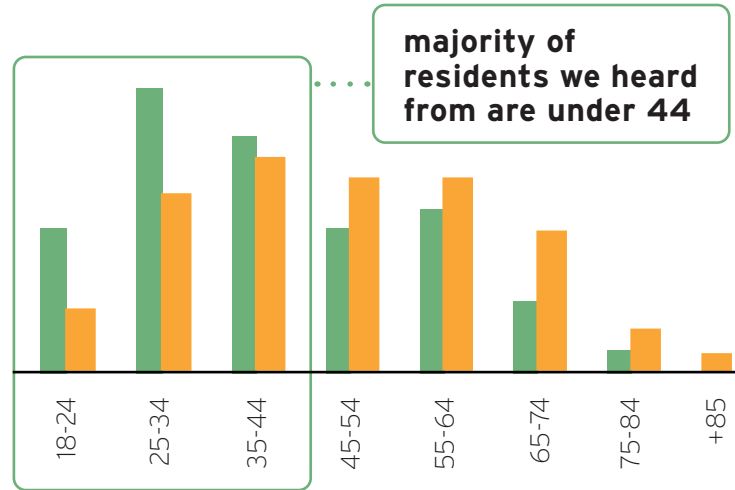
- + Your responses not only help us understand you and your family's hopes and needs for the future but they also serve as the baseline of the plan!
- + In the months ahead, we will work together to develop strategies to address the survey findings.
- + The following results are what we heard from you.
- + If there's something that surprises you or if you have a different experience from what we're showing, this is the time to share that information!



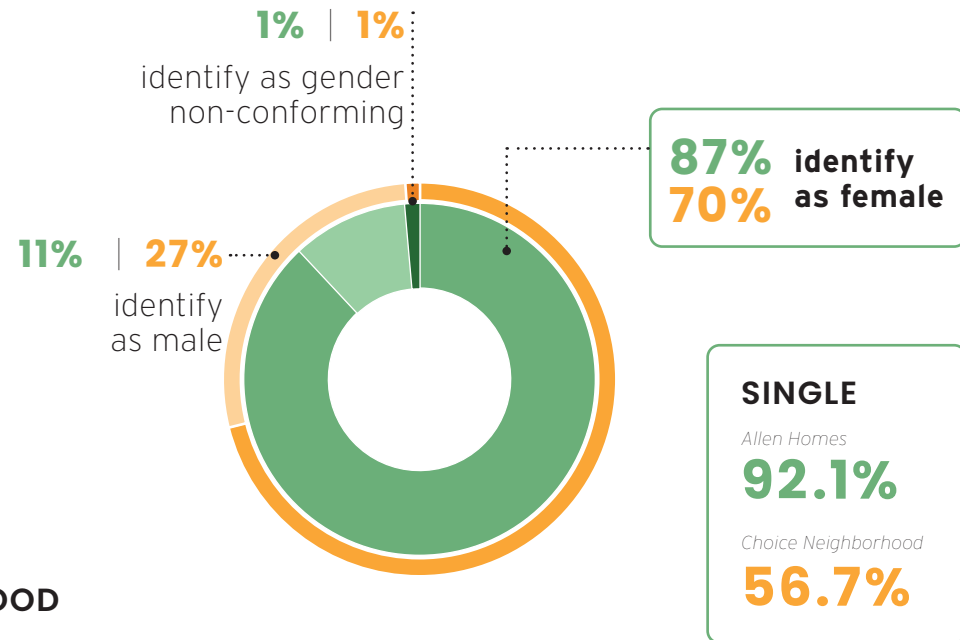
# WHO DID WE HEAR FROM?

## ABOUT THE SURVEY RESPONDENTS

"WHAT AGE CATEGORY BEST DESCRIBES YOU?"

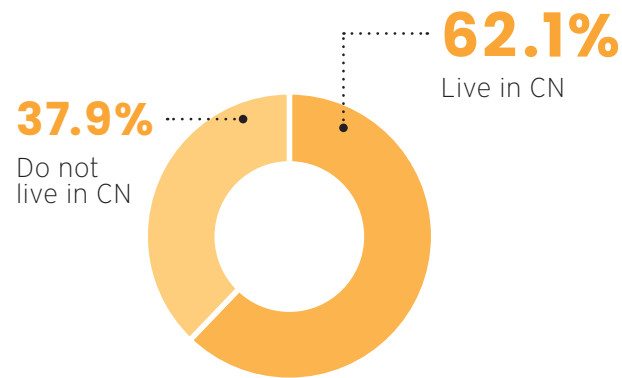


"WITH WHICH GENDER DO YOU IDENTIFY?"

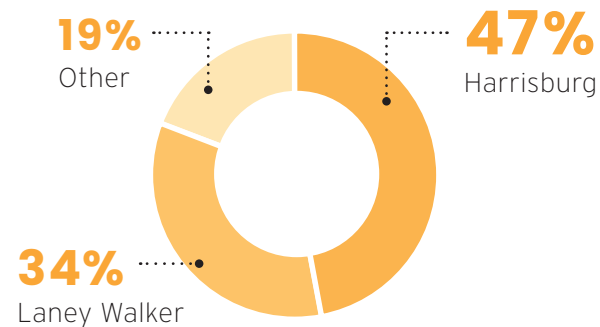


"DO YOU LIVE IN THE CHOICE NEIGHBORHOOD?"

(Neighborhood Survey Participants)



"WHICH NEIGHBORHOOD DO YOU LIVE IN?"



**RACE**

Black or African American

94.7% | 68%

White

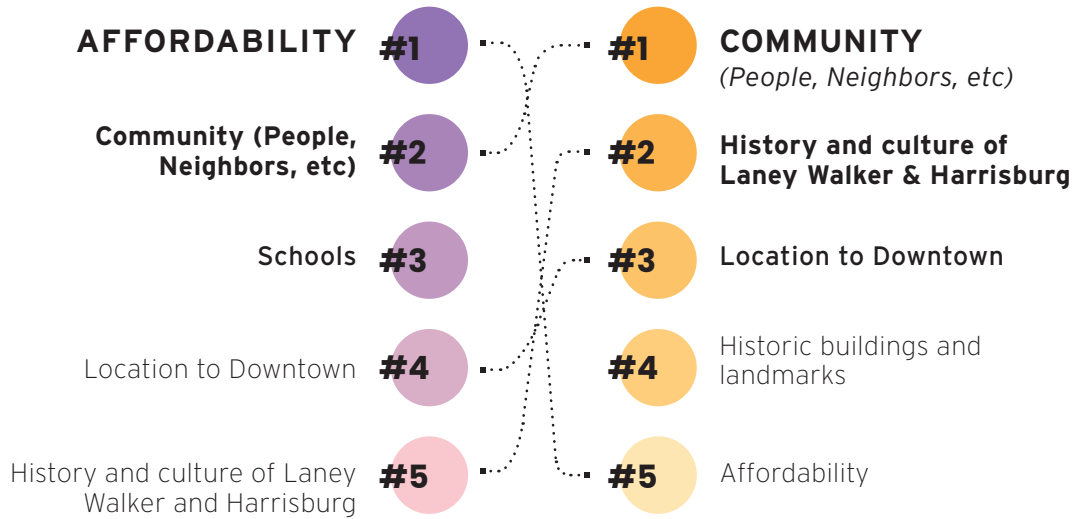
0% | 22%

### Key Takeaways:

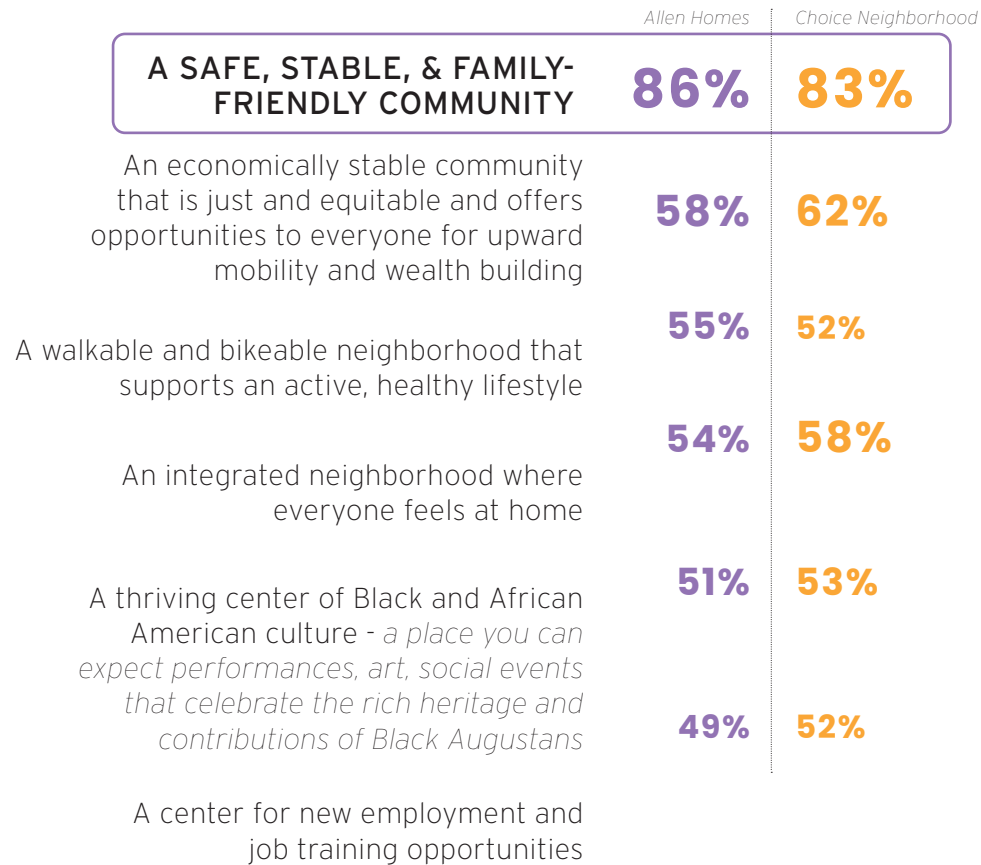
- Survey participants are pretty consistent with the neighborhood demographics.
- We primarily heard from folks **under 44**.
- Most of the Neighborhood survey respondents live within the Choice Neighborhood.
- The majority of survey respondents **identify as Black or African American**.
- The majority of residents are **single**.
- **None** of the survey respondents at **Allen Homes** are **married**.
- Close to **half of households in Allen Homes** have **children under 5** and about **half** have **school-aged children**.

# NEIGHBORHOOD.

"WHAT DO YOU THINK ARE THE NEIGHBORHOOD'S GREATEST STRENGTHS?"



"WHAT WOULD YOU LIKE THIS NEIGHBORHOOD TO BE KNOWN FOR AFTER IT HAS BEEN REDEVELOPED AND INVESTED IN?"



## Key Takeaways:

- There's a lot of overlap on what the **neighborhood strengths** are:
  - Affordability
  - Community
  - History & Culture
- Themes of what people want to **see in the future:**
  - Safety
  - Stability
  - Equitable development
  - Family-Friendly
  - Integrated & Welcoming
  - Center of Black & African American culture

**71% of Allen Homes residents feel CNI will have a positive impact on their neighborhood.**

# NEIGHBORHOOD.

## “WHAT AMENITIES WOULD IMPROVE THE NEIGHBORHOOD FOR YOU AND YOUR FAMILY?”

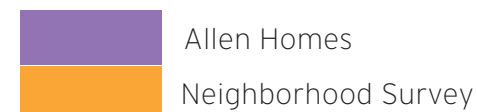
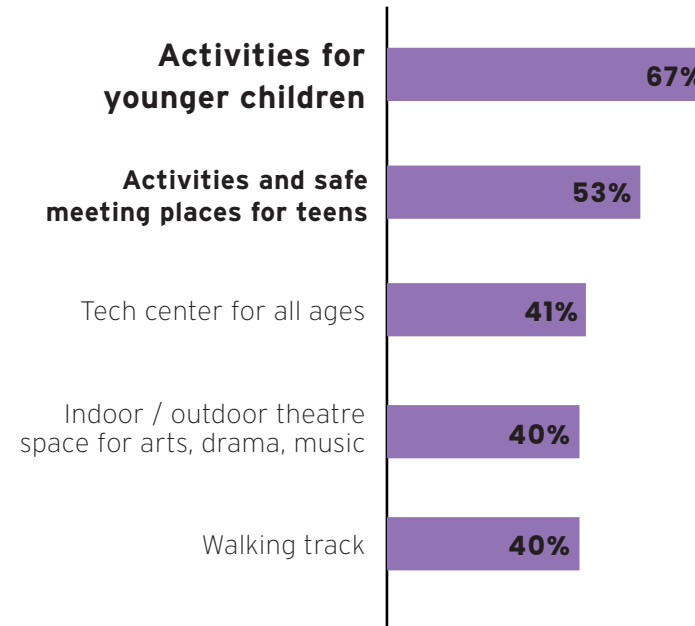
- |   |   |
|---|---|
| <ul style="list-style-type: none"> <li>#1 FULL-SERVICE GROCERY STORE</li> <li>#2 Playground / Tot Lot</li> <li>#3 Places to eat (restaurants, cafes, coffee shop)</li> <li>#4 Improved neighborhood parks</li> <li>#5 Improved streets with safer sidewalks and street crossings</li> </ul> | <ul style="list-style-type: none"> <li>#1 FULL-SERVICE GROCERY STORE</li> <li>#2 Improved streets with safer sidewalks and street crossings</li> <li>#3 Improved neighborhood parks</li> <li>#4 Places to eat (restaurants, cafes, coffee shop)</li> <li>#5 Making spaces more inclusive / accessible for people of all ages/abilities</li> </ul> |
|---|---|



### Where do most people shop for groceries?

- Harvey's Supermarket
- Family Dollar
- Dollar Tree

## “WHAT SORT OF SOCIAL ACTIVITIES OR ORGANIZATIONS DO YOU FEEL ARE MISSING IN THE NEIGHBORHOOD?”

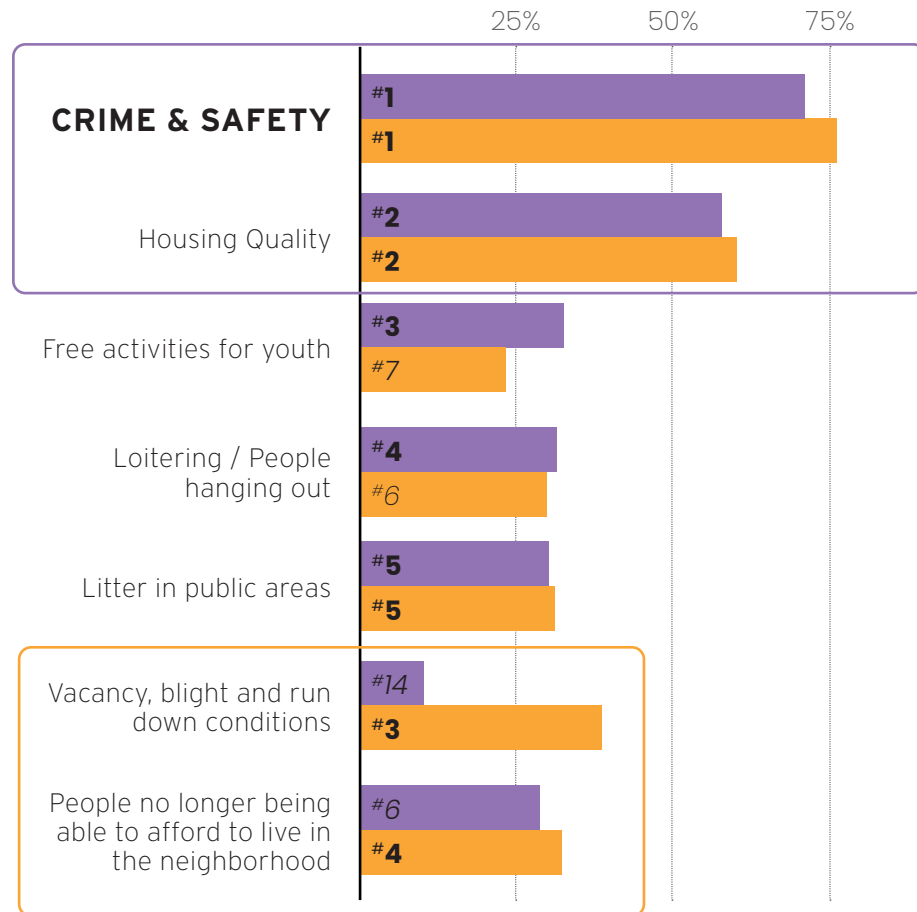


## Key Takeaways:

- **Amenities + Activities** are missing and would improve residents' lives
  - Grocery stores
  - Places to eat
  - Playground / Tot Lot especially important to Allen Homes residents who want to see more youth activities, programming, and safe spaces to gather.
- **Neighborhood residents would like to see:**
  - Improved streets, sidewalks, and crossings
  - Inclusive spaces for all people, ages, and abilities

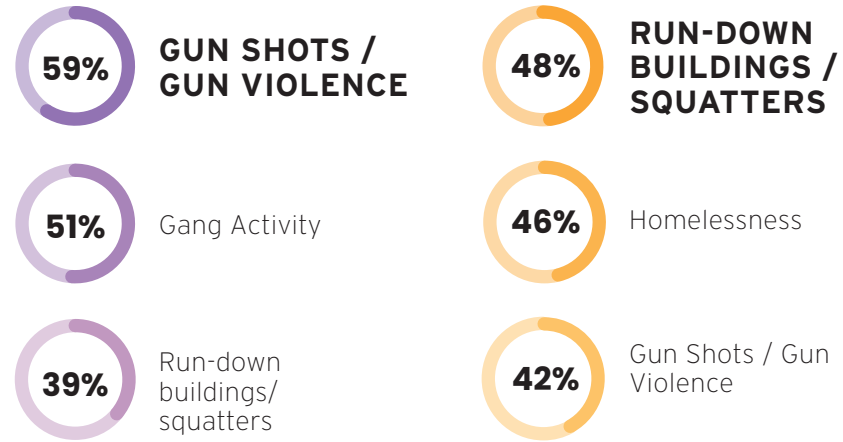
# NEIGHBORHOOD: SAFETY.

"WHAT NEIGHBORHOOD CHALLENGES NEED TO BE IMPROVED IMMEDIATELY?"

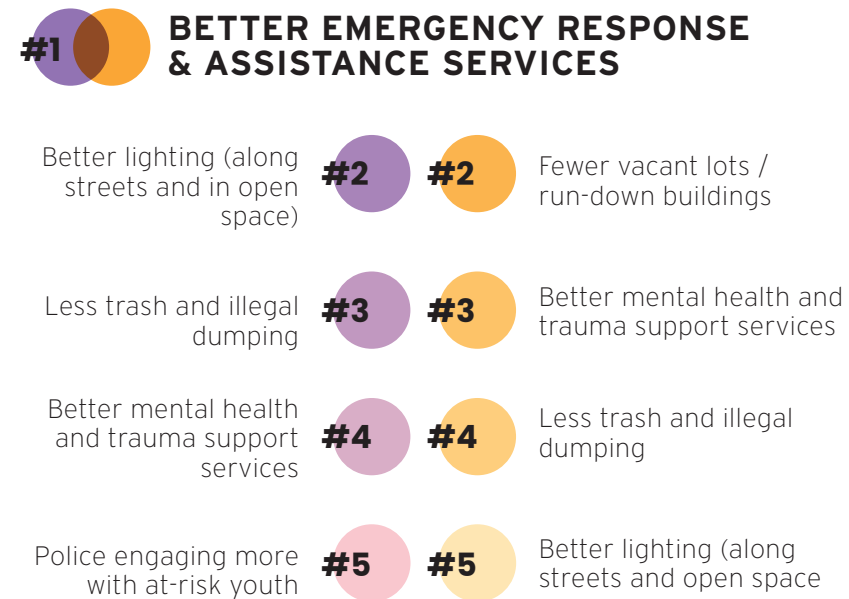


Allen Homes  
Neighborhood Survey

"WHAT ARE THE TOP THREE SAFETY CONCERNS FOR YOU AND YOUR FAMILY?"



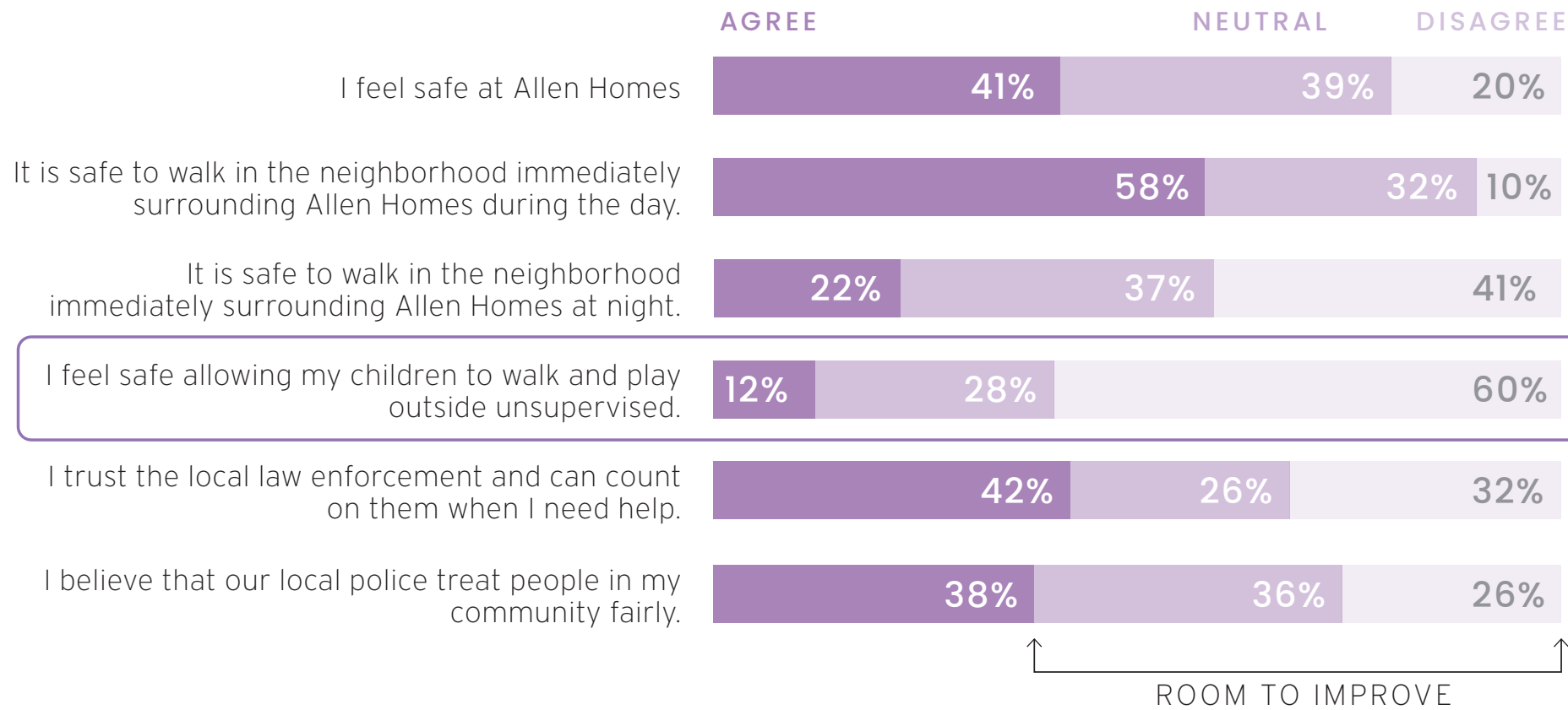
"WHAT WOULD MAKE YOU FEEL SAFER IN THE NEIGHBORHOOD?"



## Key Takeaways:

- **Safety and feeling safe** is a top concern for all residents.
- In the wider neighborhood, **housing quality and litter** are a challenge.
- Neighborhood residents also cite **vacancy & blight and no longer being able to afford to live** here as a challenge.
- **Better emergency response and assistance** was at the top of the list of ways to make the neighborhood feel safer.
- Also of note is the need for mental health and trauma support services (which may exist but residents may not be aware of them).

# NEIGHBORHOOD: SAFETY.



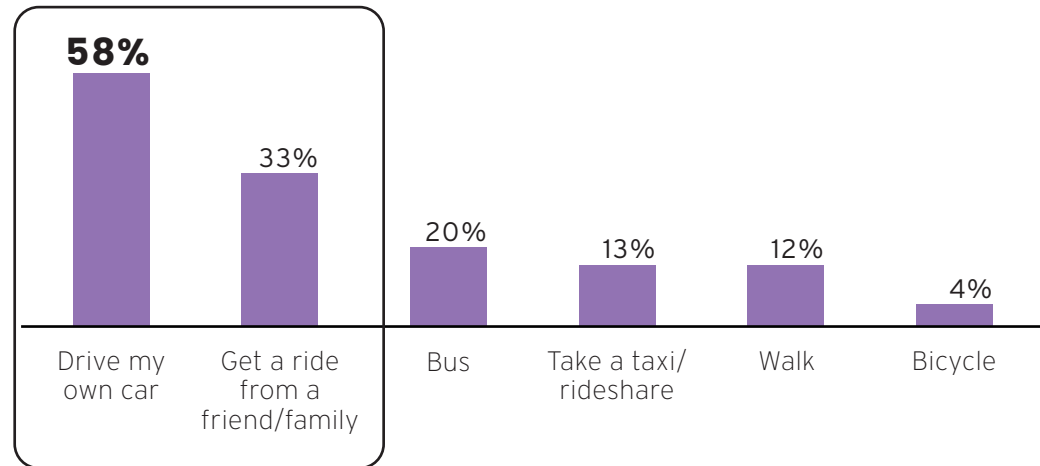
Allen Homes  
Neighborhood Survey

## Key Takeaways:

- Although **41% of residents feel safe at Allen Homes** in general, **20% do not**, and residents feel **much less safe at night**.
- Allen Homes residents **are not comfortable with their children walking or playing outside unsupervised**.
- One way Allen Homes residents feel safety could be improved is for the Sheriff's Office to hold monthly or quarterly meetings at/ or near Allen Homes to provide updates and discuss strategies for improvement.

# NEIGHBORHOOD: MOBILITY.

"WHAT TYPE OF TRANSPORTATION DO YOU USE MORE OFTEN?"



Of those who work, **60%** drive their own car

**NO ALLEN HOMES SURVEY RESPONDENTS** and only **17% OF CHOICE NEIGHBORHOOD** respondents work in the Choice neighborhood.

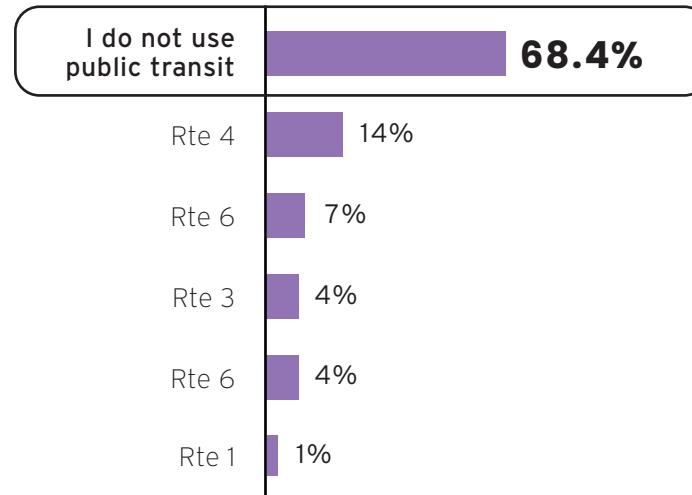


When asked, what are some of the reasons people struggle to find jobs, Allen Homes residents said:

**#1** There is not enough transportation to jobs

Allen Homes  
Neighborhood Survey

"WHICH TRANSIT STOP DO YOU USE MOST OFTEN?"



"WHERE DO YOU TYPICALLY TAKE PUBLIC TRANSIT TO?"

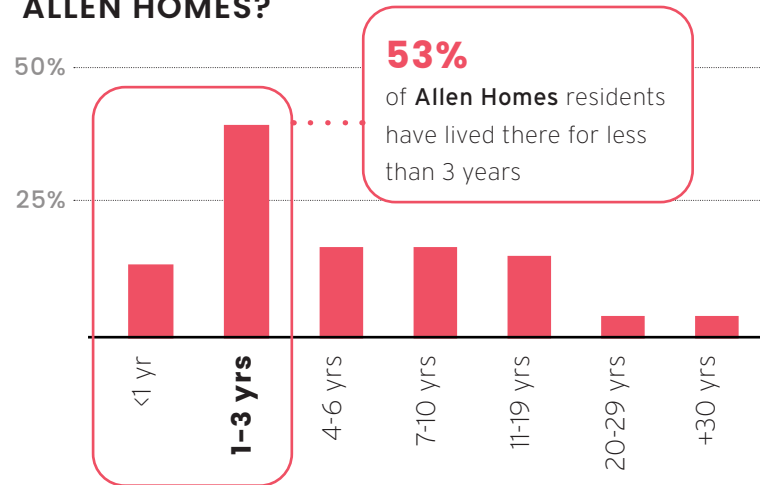
- #1** Daily errands
- #2** Medical services
- #3** Clothing and home goods
- #4** School
- #5** Daycare

## Key Takeaways:

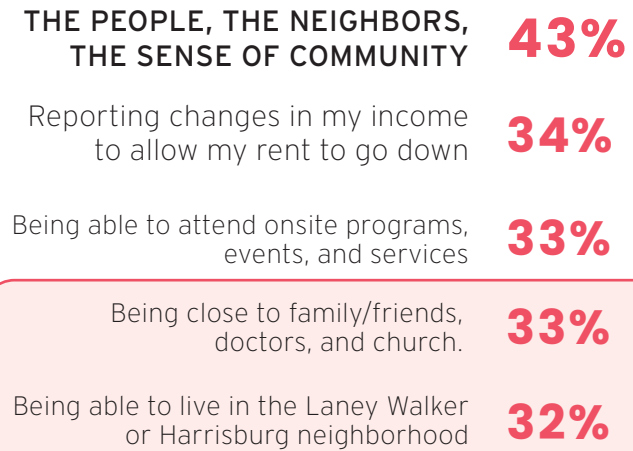
- Despite the pedestrian scale of much of the neighborhood, **most residents rely on cars to get around.**
- Most Allen Homes residents **don't use public transit**, but those who do rely on the bus for daily errands / needs
- When asked about things that **pose a challenge in daily life**, most people are affected by:
  - Potholes
  - Safe crossings
  - Lack of covered bus shelters / bus stops

# HOUSING: PRESENT.

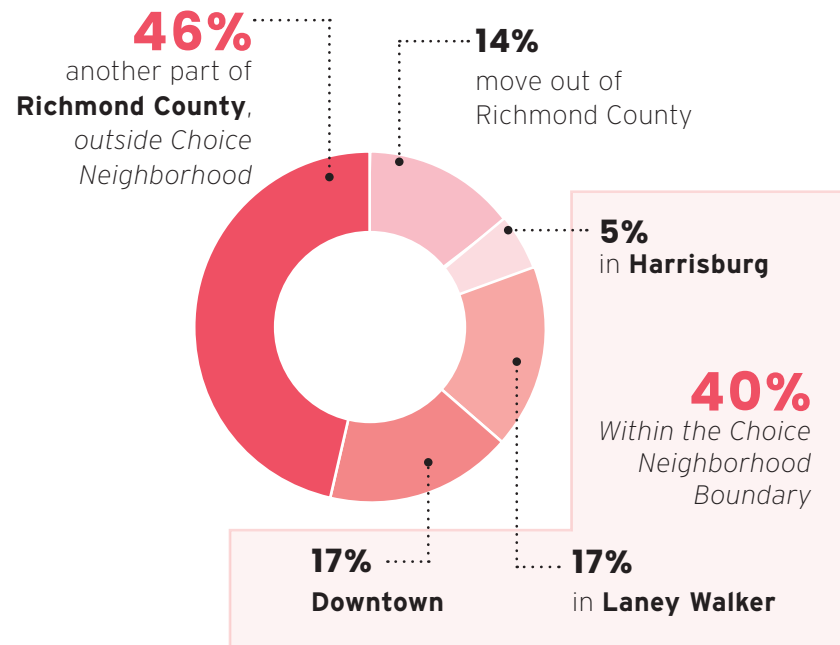
## "HOW LONG HAVE YOU LIVED AT ALLEN HOMES?"



## "WHAT DO YOU LIKE MOST ABOUT ALLEN HOMES?"



## "IF NEW HOUSING IS BUILT, WHERE WOULD YOU LIKE TO RELOCATE?"



## "DO YOU RENT OR OWN YOUR HOME?"

**58%** of Choice Neighborhood residents have lived there for less than 5 years



**ONLY 34%** Own

**66%** Rent

Allen Homes  
Neighborhood Survey

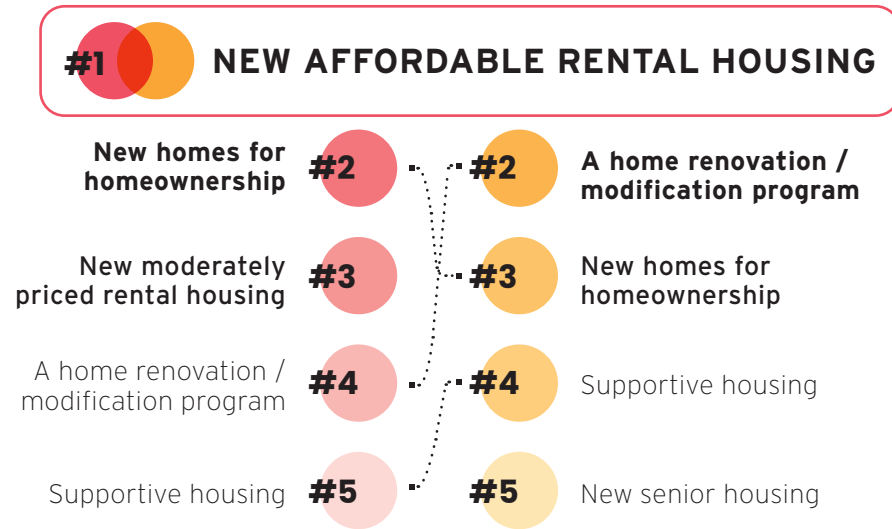
## Key Takeaways:

- A fairly transient community, yet **the people, neighbors, and sense of community is highly valued** by residents.
- Although **close to half** of Allen Homes residents said they'd like to **move out of Richmond County**, many also said **being close to their family and friends, and living in Laney Walker and Harrisburg are among the best things** about Allen Homes—this is something to dig deeper into.
- There is a **high percentage of renters in the Choice Neighborhood**. Increasing rates of homeownership can increase stability and help reduce blight and vacancy.

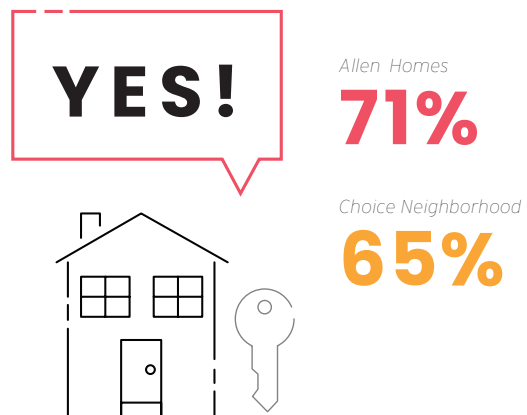


# HOUSING: FUTURE.

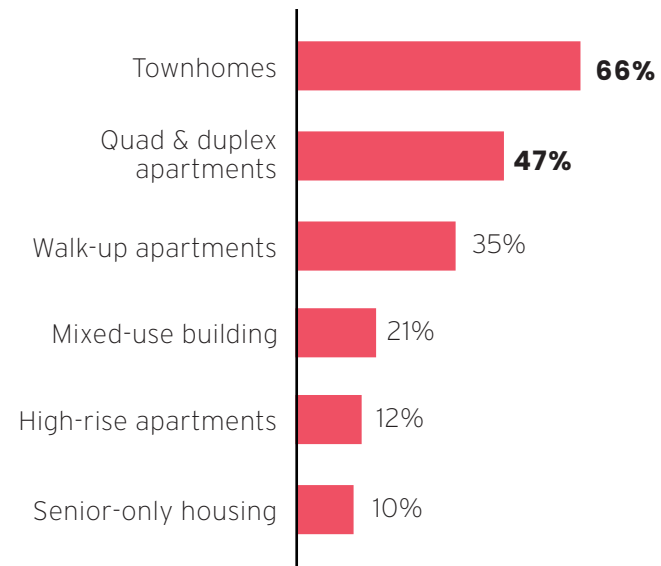
“WHAT TYPE OF HOUSING DO YOU FEEL IS NEEDED IN THE CHOICE NEIGHBORHOOD?”



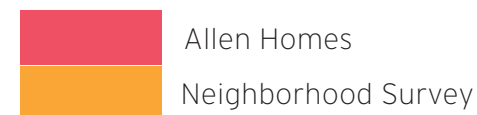
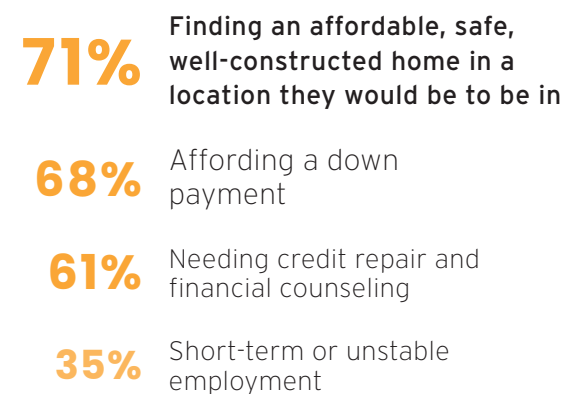
“ARE YOU INTERESTED IN WORKING TOWARD BUYING A HOME IN THE NEXT FEW YEARS?”



“WHAT STYLE OF HOUSING DO YOU FEEL IS MOST SUITED TO RESIDENTS AT ALLEN HOMES?”



CHALLENGES IN MOVING TOWARDS HOMEOWNERSHIP:

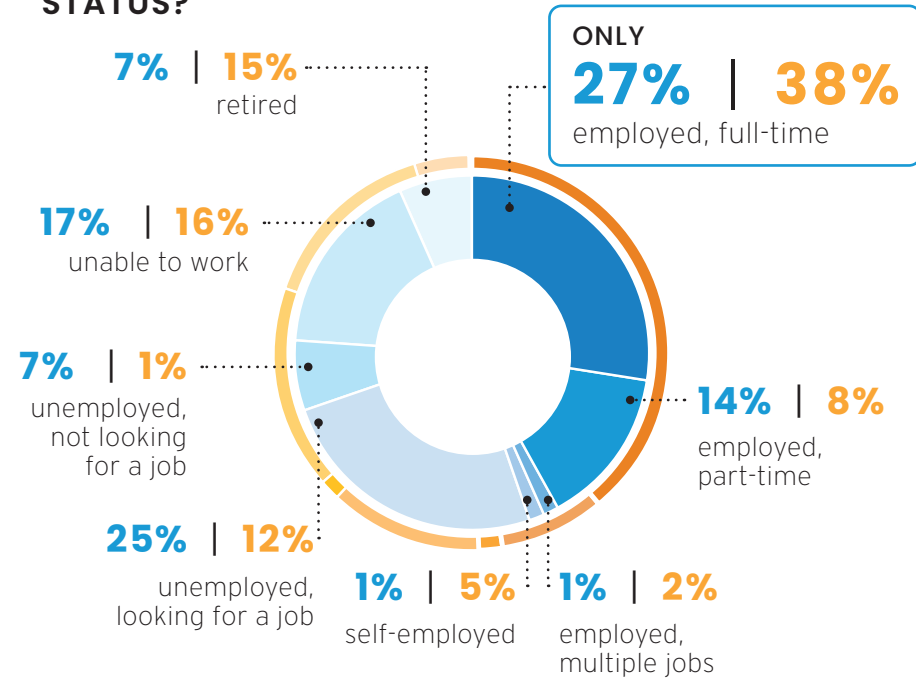


## Key Takeaways:

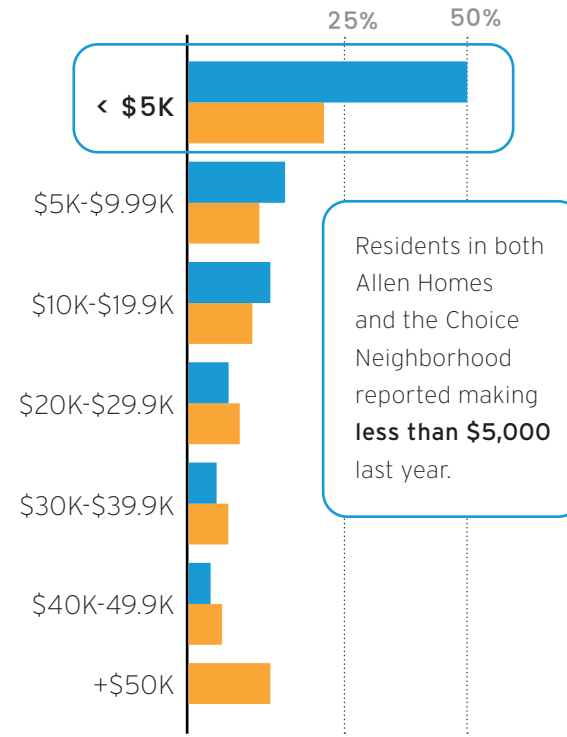
- **Affordable housing options are a top priority** for both Allen Homes and Neighborhood residents
- Allen Homes residents are most interested in living in **townhomes or quad & duplex apartments.**
- Allen Homes residents feel it's **important to have playground, exercise rooms, and laundry facilities at any future development.**
- Both Allen Homes and Neighborhood residents have a **strong desire to move toward homeownership.**

# PEOPLE: EMPLOYMENT & INCOME.

## "WHAT IS YOUR CURRENT EMPLOYMENT STATUS?"



## "WHAT WAS YOUR HOUSEHOLD INCOME LAST YEAR?"



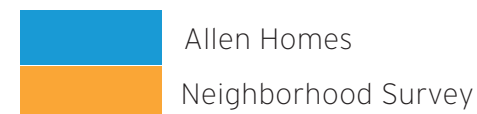
Residents in both Allen Homes and the Choice Neighborhood reported making less than \$5,000 last year.

## Key Takeaways:

- Despite high number of well-paying positions, **incomes and levels of employment for Allen Homes and Neighborhood residents are low**
- Almost **half of Allen Homes** and about **29% of Choice Neighborhood** residents are **making less than \$5,000 a year.**
- And **87% of Allen Homes residents make less than \$20,000**
- About a **quarter** of Allen Homes residents are **unemployed** and have been **looking for work for over a year.**



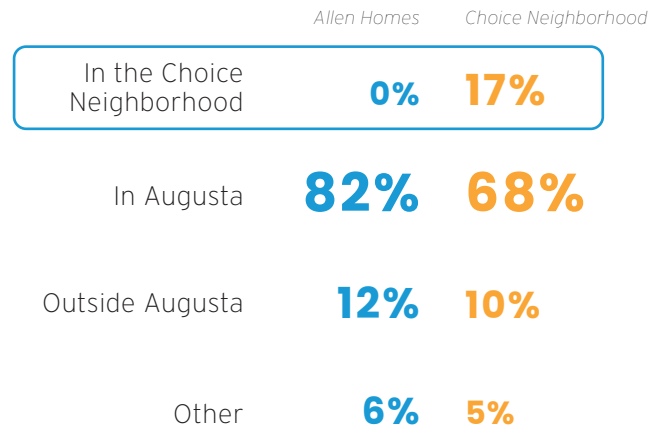
**UNLIKE OTHER CHOICE NEIGHBORHOODS** where there are few businesses nearby and transit options are limited, **our neighborhood has many employers and jobs in a variety of fields.** This poses a tremendous opportunity to create a robust employment ecosystem that could raise levels of employment and incomes.



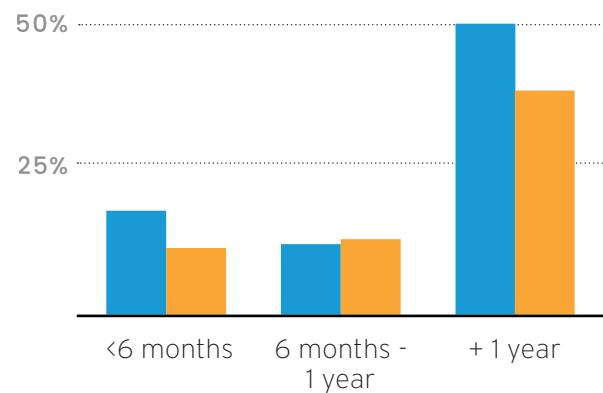
# PEOPLE: EMPLOYMENT & INCOME.

## Key Takeaways:

### "IF EMPLOYED, WHERE DO YOU WORK?"



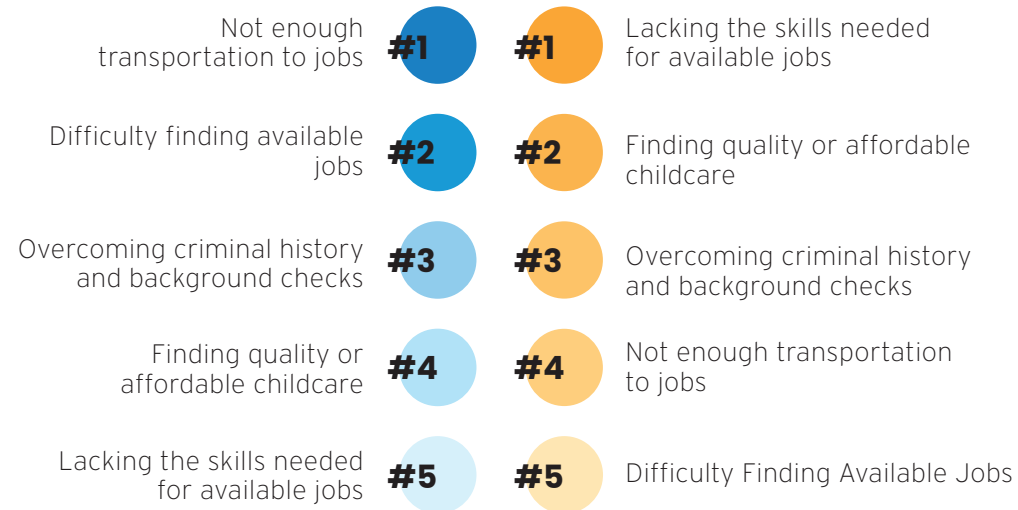
### "IF UNEMPLOYED, HOW LONG HAS IT BEEN SINCE YOU HAD A JOB?"



**53%**

said COVID-19 pandemic has affected their employment.

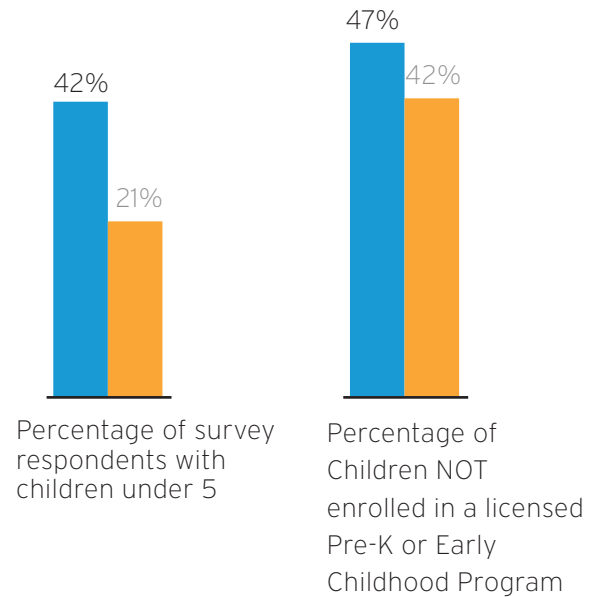
### "WHAT DO YOU FEEL ARE SOME OF THE REASONS PEOPLE IN THE NEIGHBORHOOD STRUGGLE TO GET/KEEP A JOB?"



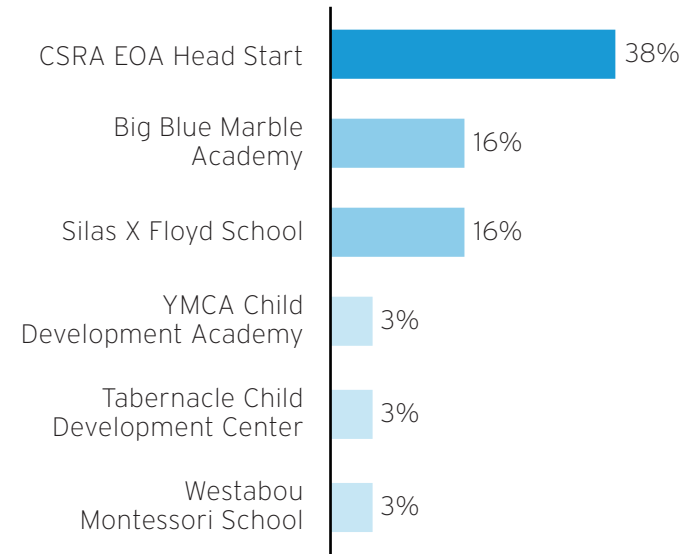
- About a **quarter of Allen Homes residents are unemployed** and have been **looking for work for over a year.**
- **None of the Allen Homes residents and only 17% of Choice Neighborhood residents work within the Choice Neighborhood.**
- Many said the **reasons** for this are due to:
  - Transportation to jobs
  - Lacking skills for available jobs
  - Quality / Affordable childcare

# PEOPLE: EARLY CHILDHOOD.

## CHILDREN AND EARLY EDUCATION



## "WHICH PRE-K OR EARLY CHILDHOOD EDUCATION PROGRAM ARE YOUR CHILDREN ENROLLED IN?"



## "WHY ARE SOME REASONS YOUR CHILDREN DO NOT PARTICIPATE IN A PRE-K OR EARLY CHILDHOOD PROGRAM?"



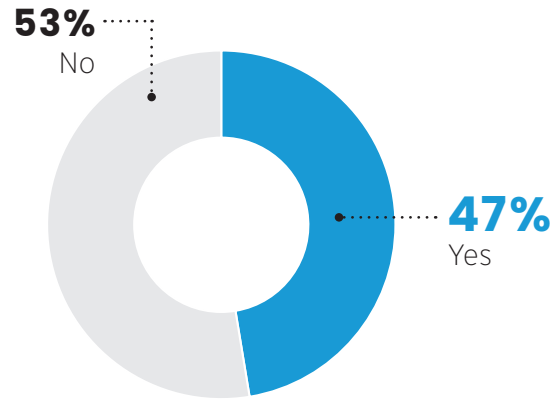
Participation in an early childhood education program is a **strong predictor of a child's long-term success and self-sufficiency.**

## Key Takeaways:

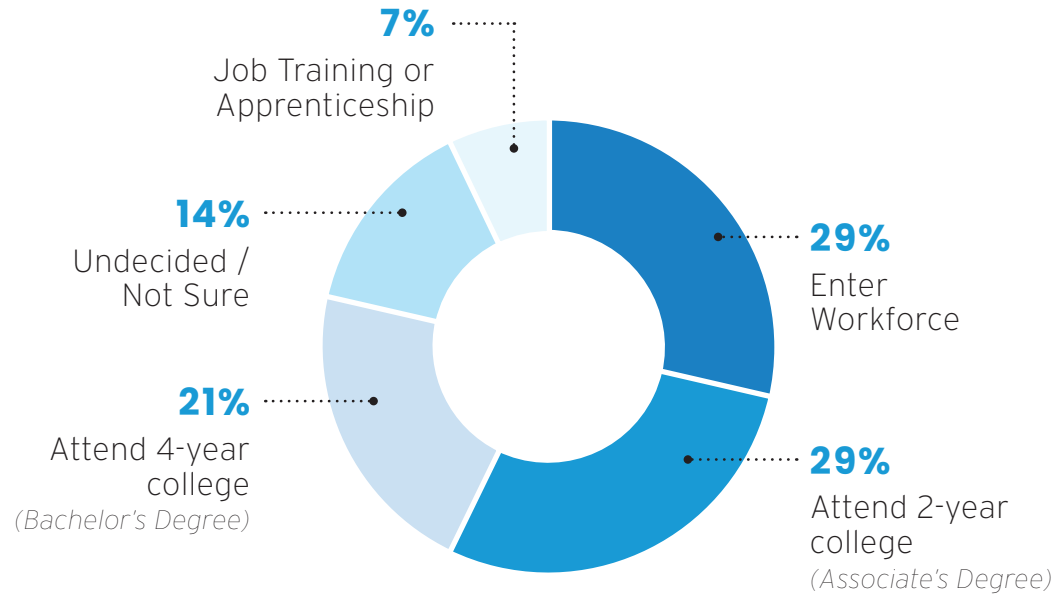
- **Allen Homes** is a very young population with a **median age of 14** (ACS 2019).
- **Close to half of households in Allen Homes have children under 5** and about half have school-aged children.
- **None of the Allen Homes survey respondents are married.**
- Families at Allen Homes **struggle to enroll their children in Pre-K or early childhood programs** because of limited availability, the cost of programs, and scheduling conflicts.

# PEOPLE: EDUCATION.

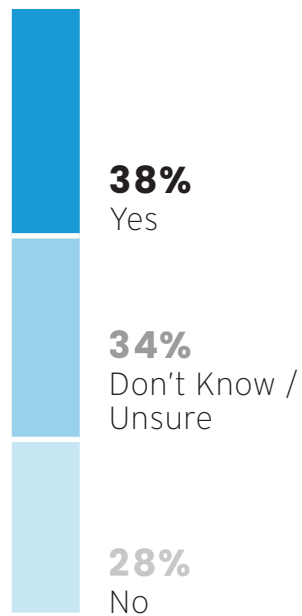
"DO YOU HAVE CHILDREN BETWEEN 5-19 OF AGE?"



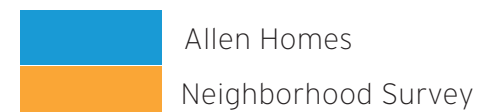
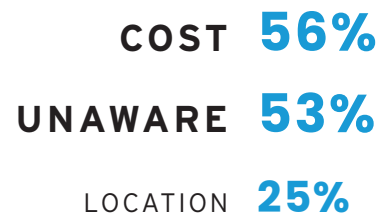
"IF YOU HAVE HIGH SCHOOL-AGED CHILDREN, WHAT PATH DO THEY HOPE TO TAKE AFTER SCHOOL?"



"DO YOU FEEL YOUR CHILDREN'S CURRENT SCHOOLING IS PREPARING HIM/HER TO ACHIEVE THEIR AFTER HIGH SCHOOL PLANS?"



"WHY DON'T YOUR CHILD(REN) PARTICIPATE IN ANY OF THE ACTIVITIES AVAILABLE?"



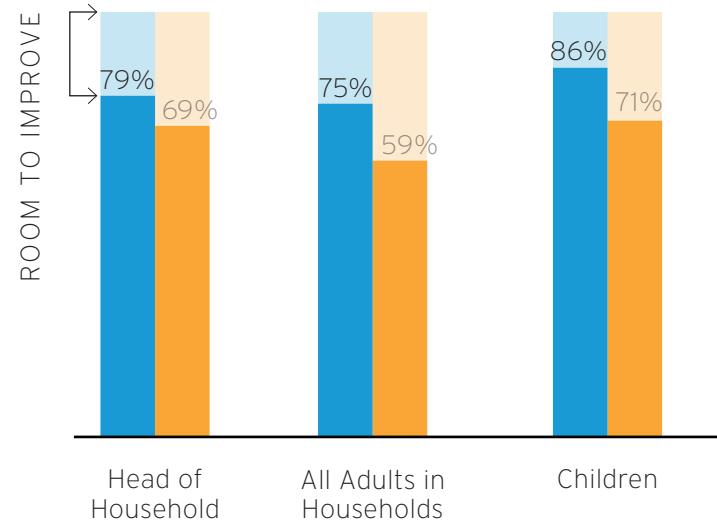
## Key Takeaways:

- Residents generally believe there is **room to improve their children's education**
- Residents would like to see:
  - summer programs
  - homework clubs on-site
  - individual tutoring
- Many residents expressed the **need for positive activities for kids to be engaged** in offline to improve communication skills and especially to keep kids safe from violence and crime
- Most Allen Homes **kids don't participate in existing programs because of cost** or they are **unaware** that they exist

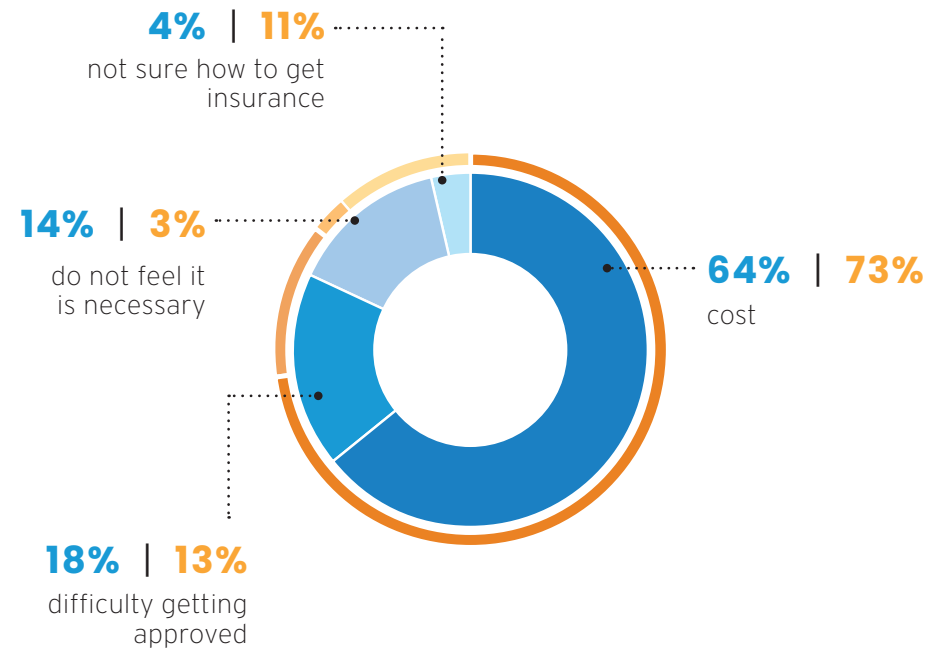
# PEOPLE: HEALTH & WELLNESS.

## Key Takeaways:

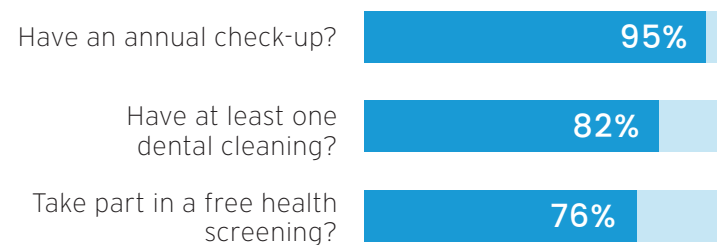
### “DO YOU HAVE HEALTH INSURANCE?”



### “IF YOU, OTHER ADULTS, OR CHILDREN IN YOUR HOUSEHOLD DO NOT HAVE HEALTH INSURANCE, WHAT IS THE MAIN REASON?”



### IN A TYPICAL YEAR, DO THE MEMBERS OF YOUR HOUSEHOLD...



In the past three years, **30-40% of Allen Homes residents** have had difficulty scheduling medical appointments, affording medical visits, and finding information about physical and mental health services.

- Residents in Allen Homes and the Choice Neighborhood take care of their health, but may lack access to full health coverage.
- Approximately **20-25% of all residents do not have health insurance**. Cost is cited as the main reason.
- On the positive side, 95% of Allen Homes residents say they have an annual check-up and 82% have at least one dental cleaning a year.

# PEOPLE: HEALTH & WELLNESS.

## "WHERE DO YOU TYPICALLY GO TO RECEIVE MEDICAL CARE WHEN YOU OR YOUR CHILDREN ARE SICK?"

- #1 Augusta University Health - Family Medicine
- #2 Primary Care Doctor
- #3 Urgent Care
- #4 Women's Health of Augusta
- #5 Christ Community Health (Medical & Dental Clinic)

## "HOW COULD YOUR ACCESS TO QUALITY HEALTHCARE BE IMPROVED?"

	Allen Homes	Choice Neighborhood
Locating more health facilities in the neighborhood	57%	34%
Providing a shuttle to major medical facilities	49%	31%
Extending the hours of health related facilities in the neighborhood	46%	32%
Employing staff who is culturally competent and sensitive to my circumstances/history	39%	25%
Employing staff at healthcare facilities who understand me	23%	18%

### FOOD ACCESS:



51.3%

of Allen Homes residents find that at least once per week there is not enough food in the house.

#### Reasons why:

- Cannot afford it
- Too difficult to get to store
- Too busy to shop or cook



59.2%

of Allen Homes households would like to grow their own food in either the backyard or a community garden

### Health services needed in the neighborhood:

- Physical Therapy
- Reproductive health/OB-GYN services
- Mental Health
- Behavioral health

## Key Takeaways:

- Residents at Allen Homes typically receive medical care from places around the neighborhood, but see the **need for more services and transportation to services** in the neighborhood:
  - Physical Therapy
  - Reproductive Health / OB-GYN
  - Mental Health
  - Behavioral Health
- **Food Access is a major concern** for Allen Homes residents, with over half of respondents saying it is **difficult to afford to get to the store to ensure they have enough food** in the house.

03

TIME TO HEAR  
FROM YOU!





# NOW WE WANT TO HEAR FROM YOU!

## STATIONS:

1. HOUSING
2. NEIGHBORHOOD
3. HEALTH
4. EDUCATION
5. EMPLOYMENT

**ALSO CHECK OUT:**  
WELCOME + INSPIRATION HUB

*You can . . .*

## **JOIN A DISCUSSION** *(3 for 20 minutes each)*

We'll be talking through the survey results, and asking you about your experiences and discussing ideas.

*We recommend you choose 3 topics you're most interested in and join those discussions for 20 minutes each.*

## **PROVIDE FEEDBACK ON THE BOARDS**

If you'd rather go through all the stations and respond on your own, visit every station to read and respond to the questions.

*If you have questions, there will be someone there to help you!*



**You have about an hour  
to provide your feedback!**

*Thank you for coming!*