

WELCOME!

What is the Choice Neighborhoods Initiative?

WHY ARE WE PLANNING?



REIMAGINING THE LANEY WALKER-HARRISBURG CHOICE NEIGHBORHOOD

Laney Walker, Harrisburg, and downtown form an important part of the historic urban core of Augusta. To jumpstart revitalization and improve the quality of life for residents, the City of Augusta and the Augusta Housing Authority (AHA) applied for (and won) a Choice Neighborhoods Initiative (CNI) Planning Grant. This program is run by the U.S. Department of Housing and Urban Development (HUD) and is funding a two-year planning process.

The process is designed to bring residents of Allen Homes and the larger community together with city and local partners to create a shared vision for the future. While much of the focus is on lifting up Allen Homes residents, it is intended that the vision, goals, and strategies of the plan will support the entire Choice Neighborhood.

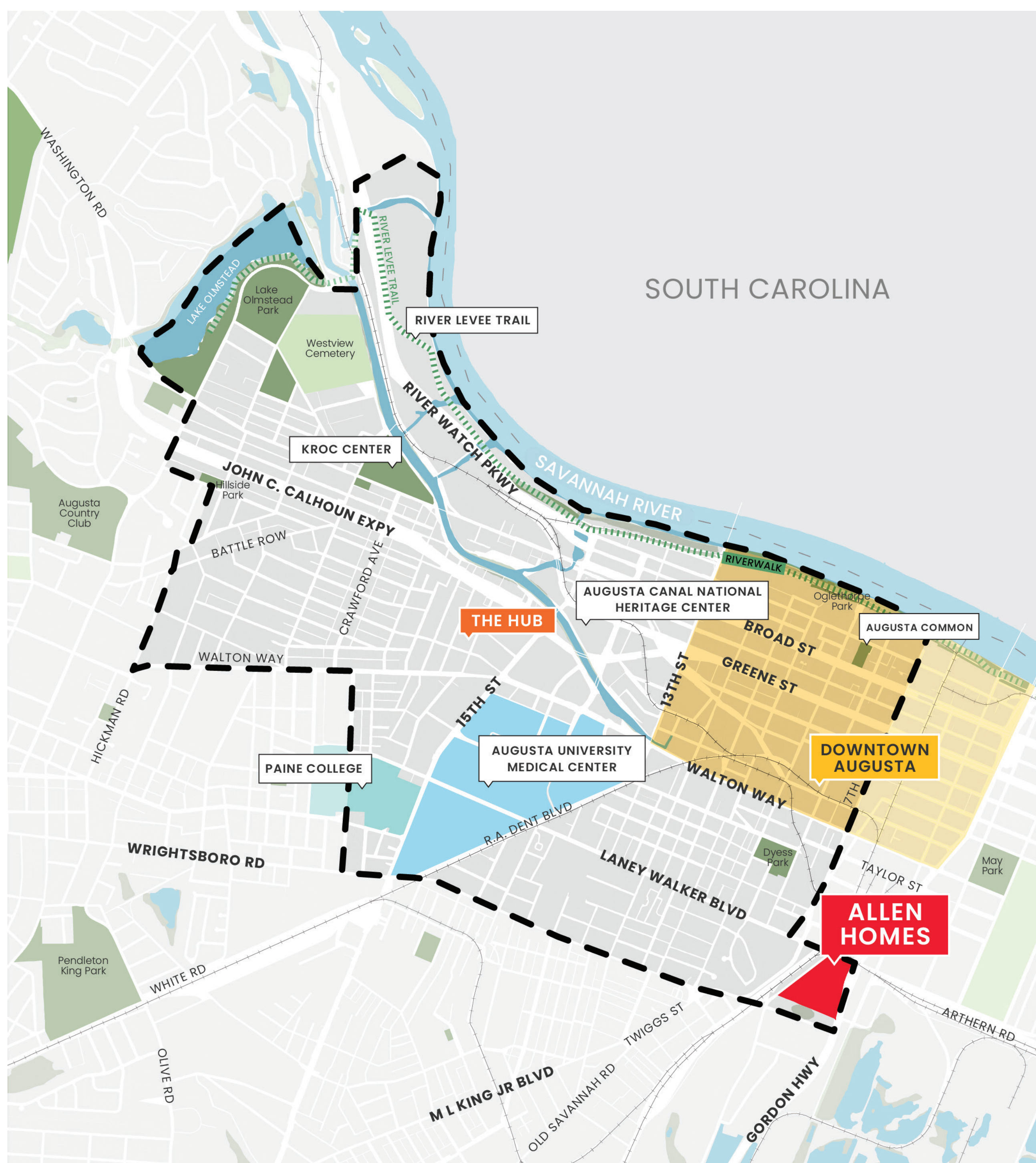


ALLEN HOMES & THE CHOICE PLAN

Owned and operated by the Augusta Housing Authority, Allen Homes sits on a 16-acre site that was built in 1961 and consists of 38 buildings with 150 residential units.

Reimagining the area and mapping out a vision for Allen Homes residents to benefit from investments in the Choice Neighborhood is a main focus of this planning effort.

WHAT GOES INTO A CHOICE NEIGHBORHOOD PLAN?

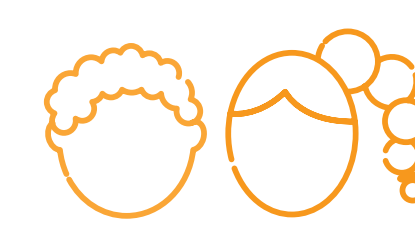


THE LANEY WALKER-HARRISBURG CHOICE NEIGHBORHOOD



HOUSING

The plan aims to improve the whole Choice Neighborhood with high-quality, mixed-income housing that is well-managed and responds to the preferences and needs of current residents and the surrounding area.



PEOPLE

The plan seeks to increase the quality of life for Choice Neighborhood residents with regard to employment and income, health and wellness, and children's education.

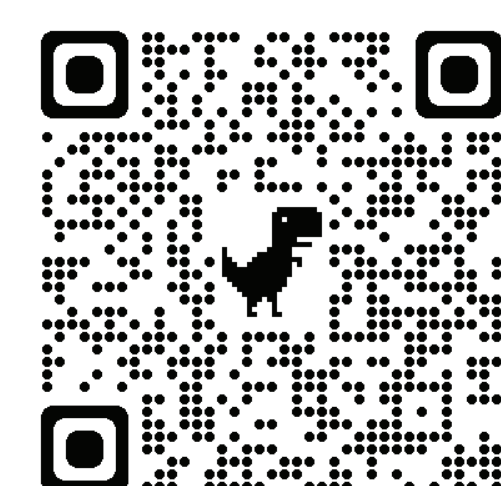


NEIGHBORHOOD

The plan strives to attract reinvestment in the neighborhood to make sure residents feel safe and have access to good schools, transportation, basic services, and daily shopping needs.

Questions?

Contact:
JEFFERY POOSER,
Project Manager, *Richmond County Tax Commissioner's Office*
jpooser@augustaga.gov
706-821-4876



Visit our website to learn more & stay involved.

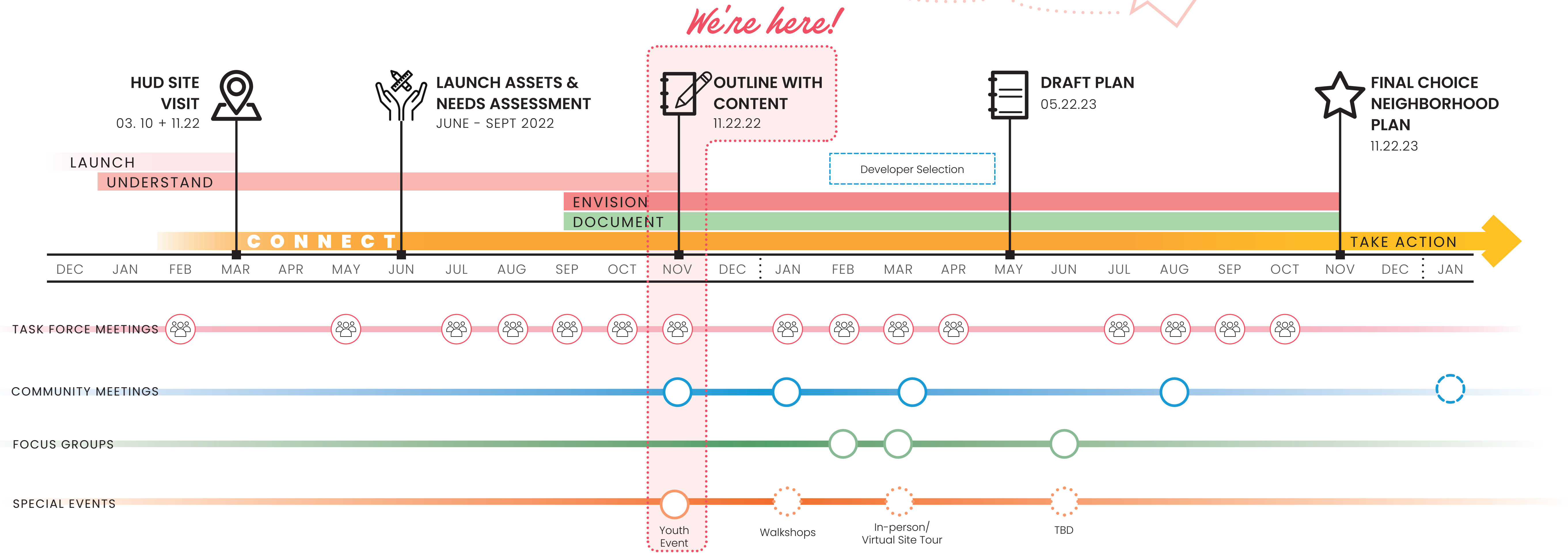
AugustasChoice.org



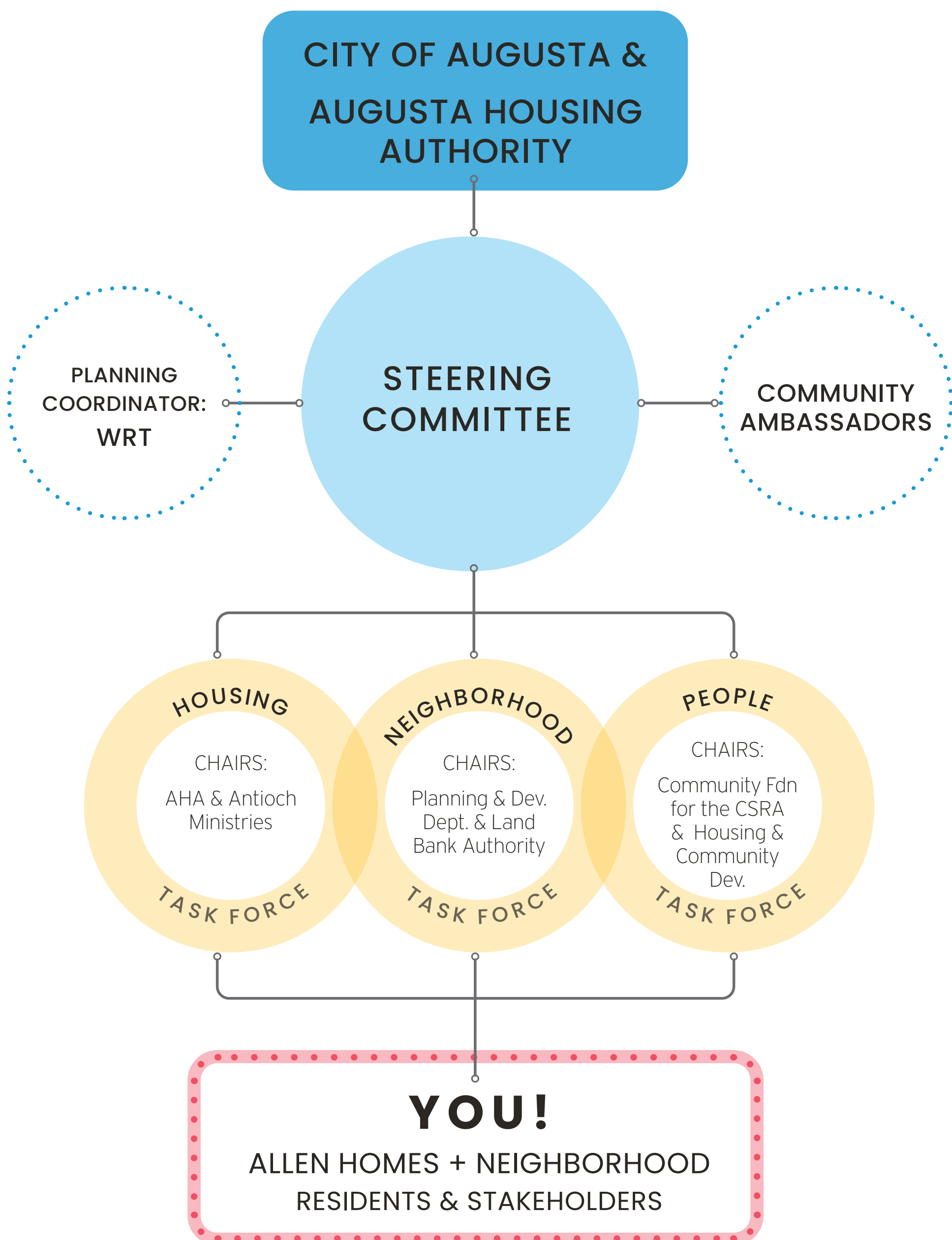
STAY INFORMED

About the planning process as it unfolds

WHERE ARE WE IN THE PROCESS?



OUR TEAM.



FREQUENTLY ASKED QUESTIONS.

Will the housing at Allen Homes be taken down?

The Allen Homes site is not well-suited for housing so a major goal of this effort is to find other locations that are closer to bus routes, stores, schools, and basic services.

We will not determine when or if the housing at Allen Homes will be taken down until this 2-year planning process with you and the community of Laney Walker & Harrisburg is finished.

If together, we decide to relocate the housing at Allen Homes, will AHA build enough units for all existing residents?

Yes, AHA is committed and federally mandated to replace every unit—one-for-one—that it takes down at Allen Homes.

Will I be able to live at the new housing site?

Yes! All residents who live in Allen Homes will have the first right to return to the new replacement housing units, if they remain in good standing and are lease compliant.

What will happen when the plan is complete?

We will work with our partners to secure funding and work to implement the plan in phases.

Will my rent increase?

No, you will pay the same amount of rent if you move to the new Choice Neighborhood replacement housing or other existing federally subsidized housing (public housing and housing choice voucher).

OTHER QUESTIONS?
We're here to answer them!

DID YOU KNOW?

ALL ARE WELCOME TO SERVE ON THE TASK FORCES!

This is YOUR neighborhood. Join a Task Force to directly shape the plan's goals and strategies.



EARLY ACTION

Activities to get the ball rolling

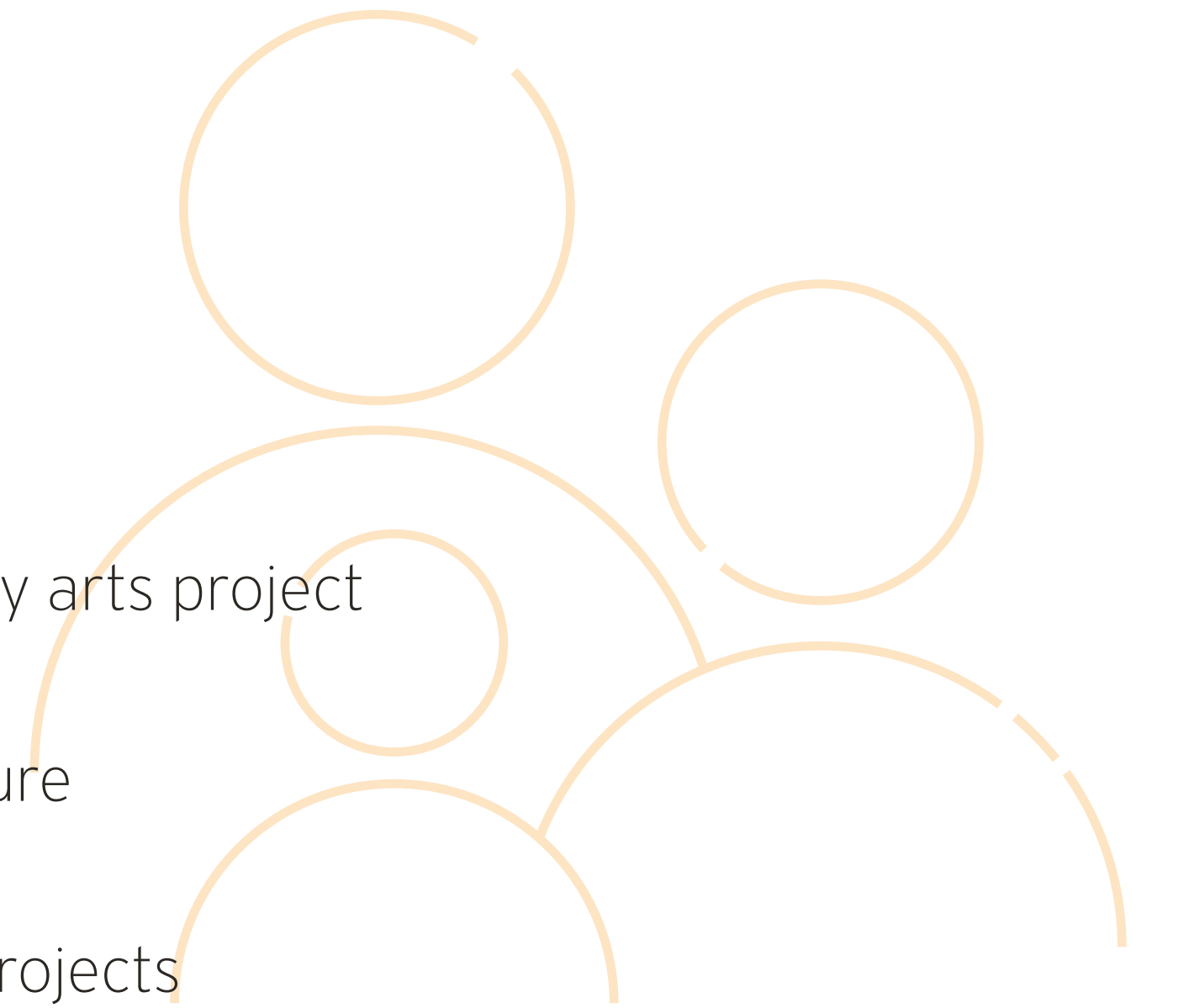
LET'S START MAKING CHANGE HAPPEN!

There is no need to wait to start making positive change happen!

Early Action Activities are smaller projects that can be completed while we are still working on our plan. These activities must involve physical community improvements or economic development initiatives.

Potential activities include:

- + Reusing vacant lots
- + Beautification, placemaking, or a community arts project
- + Storefront improvements
- + Neighborhood broadband/Wi-Fi infrastructure
- + Fresh food initiatives
- + Gap financing for economic development projects



WHAT TYPES OF ACTIVITIES WOULD YOU LIKE TO SEE HAPPEN?



Community Gathering Spaces on Vacant Lots

VOTE



WiFi Hot Spots / Mobile Computer Lab

VOTE



Permanent Pop-Ups for Small Business Incubation

VOTE



Banners & Signage

VOTE



Murals + Public Art

VOTE



Mobile Farmers Market
Selling Fresh, Local Food

VOTE



A Place for Neighborhood Concerts

VOTE

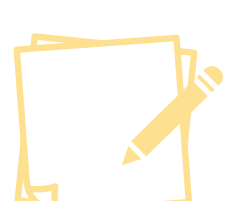


Build / Improve Parks +
Playgrounds

VOTE

DO YOU HAVE ANY OTHER IDEAS?

WHAT DO YOU THINK?



Place a sticky note with your thoughts!



HOUSING

What would you like to see in the neighborhood?



WHAT WE HEARD.

ASSETS & NEEDS ASSESSMENT SURVEY RESULTS

Allen Homes Neighborhood Survey

"WHAT TYPE OF HOUSING DO YOU FEEL IS NEEDED IN THE CHOICE NEIGHBORHOOD?"

#1 NEW AFFORDABLE RENTAL HOUSING

- #2 New homes for homeownership
- #2 A home renovation / modification program
- #3 New moderately priced rental housing
- #3 New homes for homeownership
- #4 A home renovation / modification program
- #4 Supportive housing
- #5 Supportive housing
- #5 New senior housing

WHAT TYPE OF HOUSING WOULD YOU MOST LIKE TO SEE IN THE NEIGHBORHOOD?



Townhomes

VOTE



Duplex / Quad Apartments

VOTE



Walk-Up Apartments

VOTE



Senior-Only Housing

VOTE



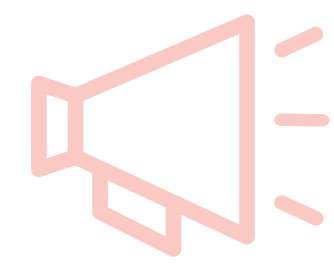
Multi-Family Apartments
(4+ stories)

VOTE



Mixed-Use
(ground floor retail + housing above)

VOTE



WHERE WOULD YOU LIKE NEW HOUSING TO GO?

pick your top 3

Close to Bus Stops

VOTE

Close to Stores & Services

VOTE

Close to the Kroc Center

VOTE

Close to the HUB

VOTE

Close to the Medical Campus

VOTE

Walkable to Downtown

VOTE

Near the Canal Trail

VOTE

Near Parks & Open Spaces

VOTE

IS THERE ANYTHING ELSE YOU'D LIKE TO LIVE CLOSE TO?

WHAT DO YOU THINK?



PUBLIC SAFETY

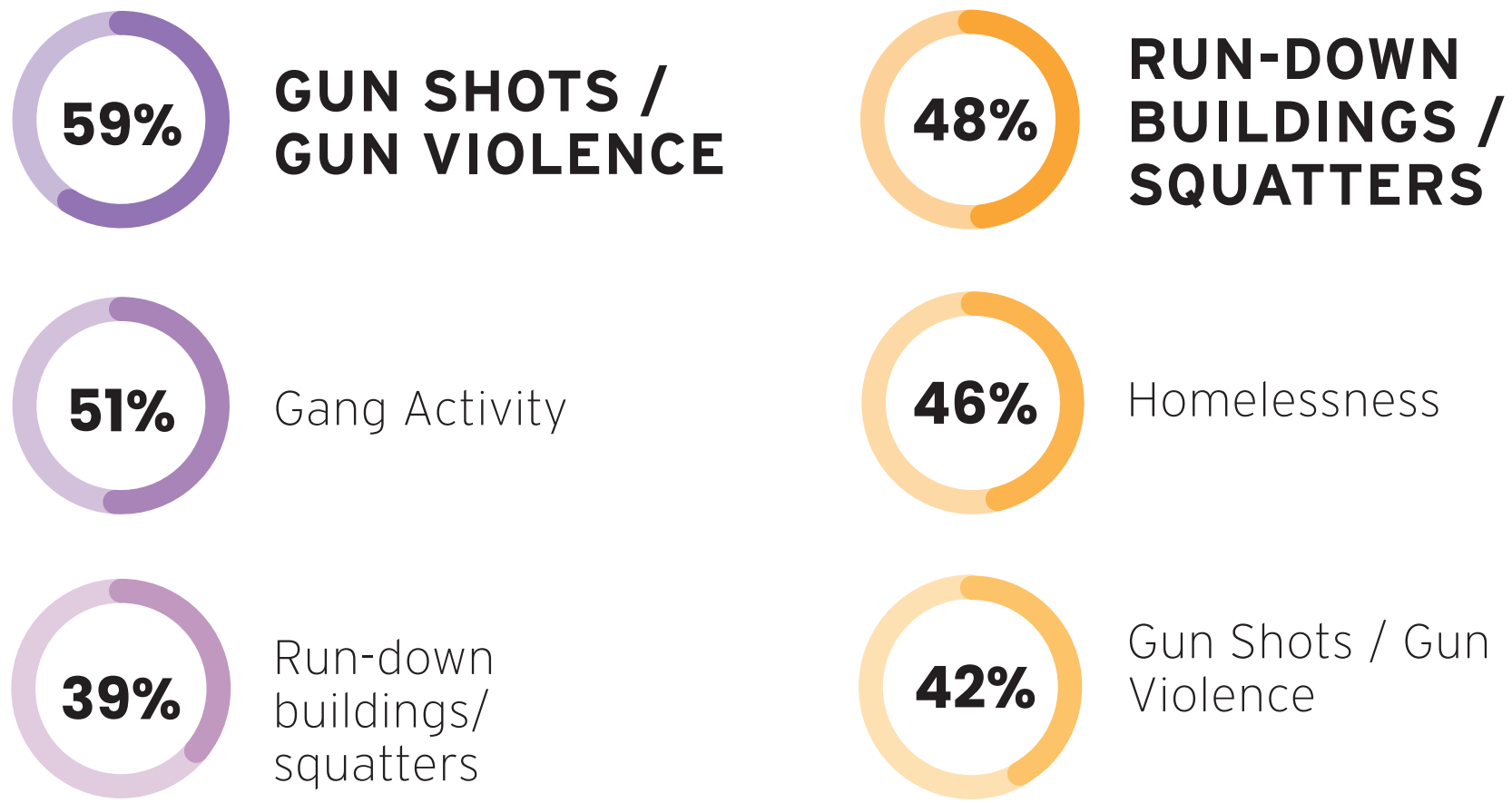
How safe do you feel in your neighborhood?



WHAT WE HEARD.

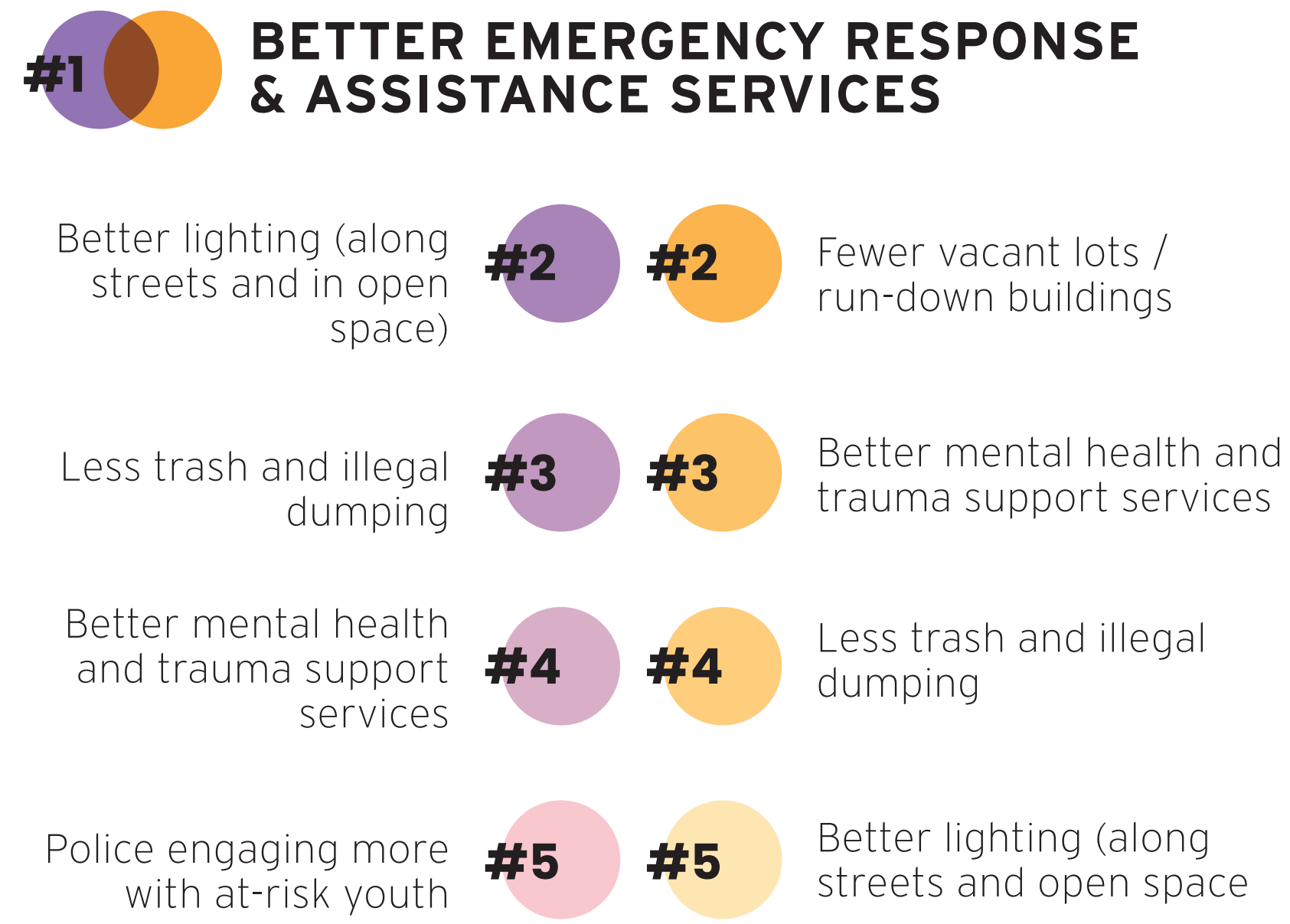
ASSETS & NEEDS ASSESSMENT SURVEY RESULTS

"WHAT ARE THE TOP THREE SAFETY CONCERNS FOR YOU AND YOUR FAMILY?"

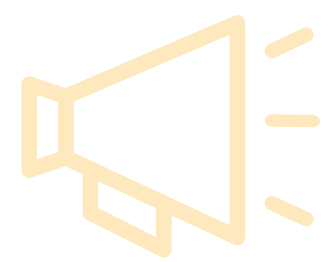
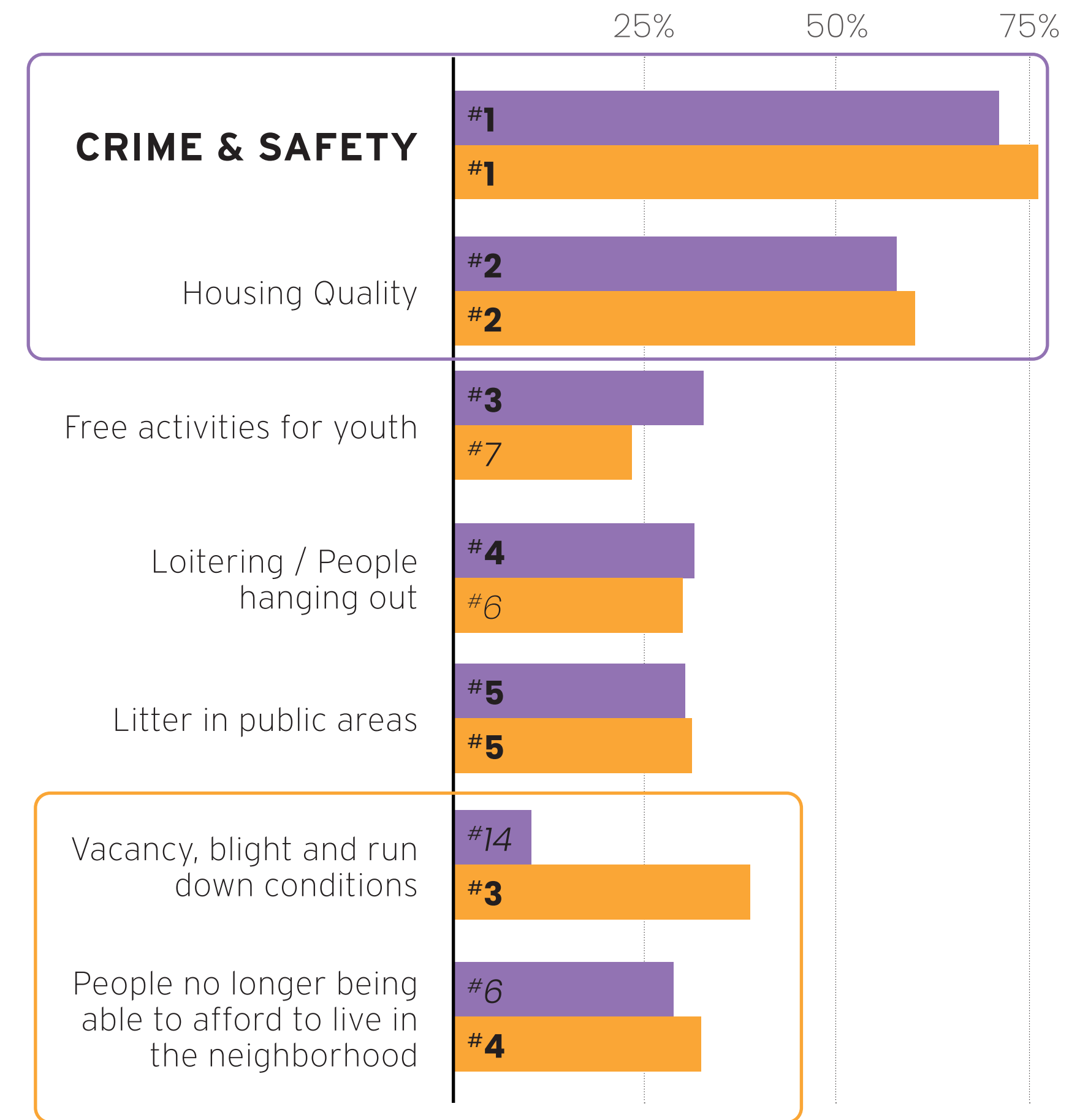


Allen Homes
Neighborhood Survey

"WHAT WOULD MAKE YOU FEEL SAFER IN THE NEIGHBORHOOD?"



"WHAT NEIGHBORHOOD CHALLENGES NEED TO BE IMPROVED IMMEDIATELY?"



DO YOU FEEL COMFORTABLE IN YOUR NEIGHBORHOOD?

Walking during the Day?	YES	NO	If not, why?
Walking at Night?	VOTE	VOTE	WHAT DO YOU THINK?
Allowing children to play outside unsupervised?	YES	NO	If not, why?

ARE THERE SPECIFIC PLACES IN THE NEIGHBORHOOD THAT FEEL UNSAFE?

WHAT DO YOU THINK?

WHICH OF THESE PROGRAMS COULD HAVE A POSITIVE IMPACT ON THE NEIGHBORHOOD?

Youth Police Athletic League	"Coffee with a Cop"
VOTE	VOTE
Neighborhood Watch	Monthly Meetings with the Sheriff's Office
VOTE	VOTE



NEIGHBORHOOD

How could the neighborhood be improved?



WHAT WE HEARD.

ASSETS & NEEDS ASSESSMENT SURVEY RESULTS

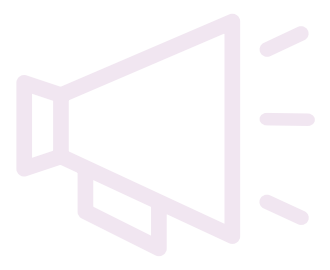
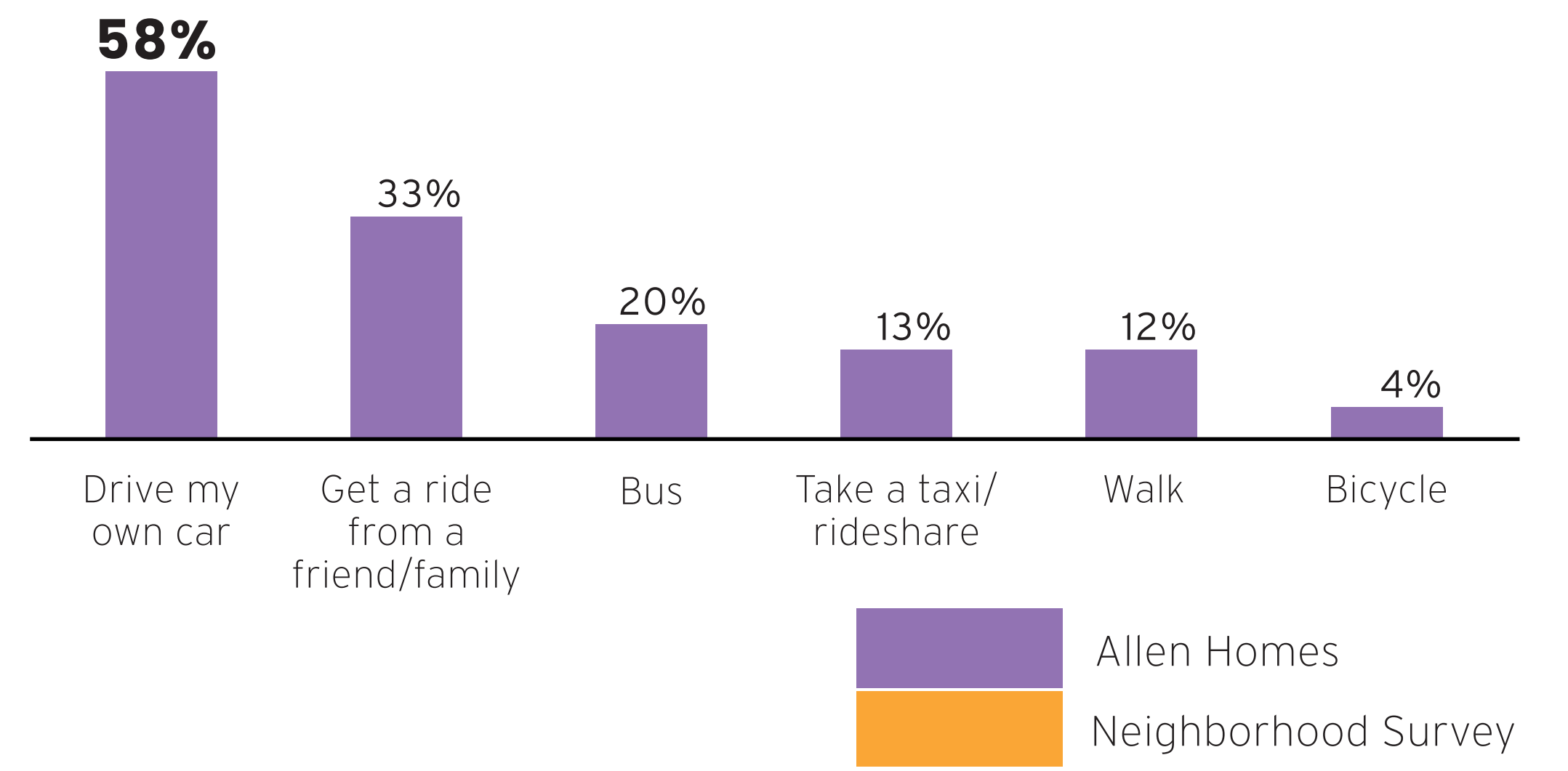
"WHERE DO YOU TYPICALLY TAKE PUBLIC TRANSIT TO?"

- #1 Daily errands
- #2 Medical services
- #3 Clothing and home goods
- #4 School
- #5 Daycare

"WHAT PARKS DO YOU FREQUENTLY USE?"

- | | |
|--|--------------------------------|
| #1 AUGUSTA RIVERWALK | #1 AUGUSTA RIVERWALK |
| #2 May Park & Community Center | #2 Lake Olmstead Park |
| #3 Dyess Park | #3 Augusta Common |
| #4 Allen Homes <i>playground, lawns & open space</i> | #4 May Park & Community Center |
| #5 Pendleton King Park | #5 Pendleton King Park |

"WHAT TYPE OF TRANSPORTATION DO YOU USE MOST OFTEN?"



WHAT IMPROVEMENTS WOULD MAKE YOU FEEL MORE COMFORTABLE:

Walking

WHAT DO YOU THINK?

Biking

WHAT DO YOU THINK?

Using Public Transportation

WHAT DO YOU THINK?

WHAT AREAS IN THE NEIGHBORHOOD NEED TO BE IMPROVED FOR WALKING/BIKING?

WHAT DO YOU THINK?

WHAT KIND OF ACTIVITIES DO YOU WISH YOU COULD DO IN A NEIGHBORHOOD PARK?

WHAT DO YOU THINK?

DO YOU USE PUBLIC TRANSIT?

YES	NO
VOTE	VOTE



EDUCATION

What are the educational concerns of the community?

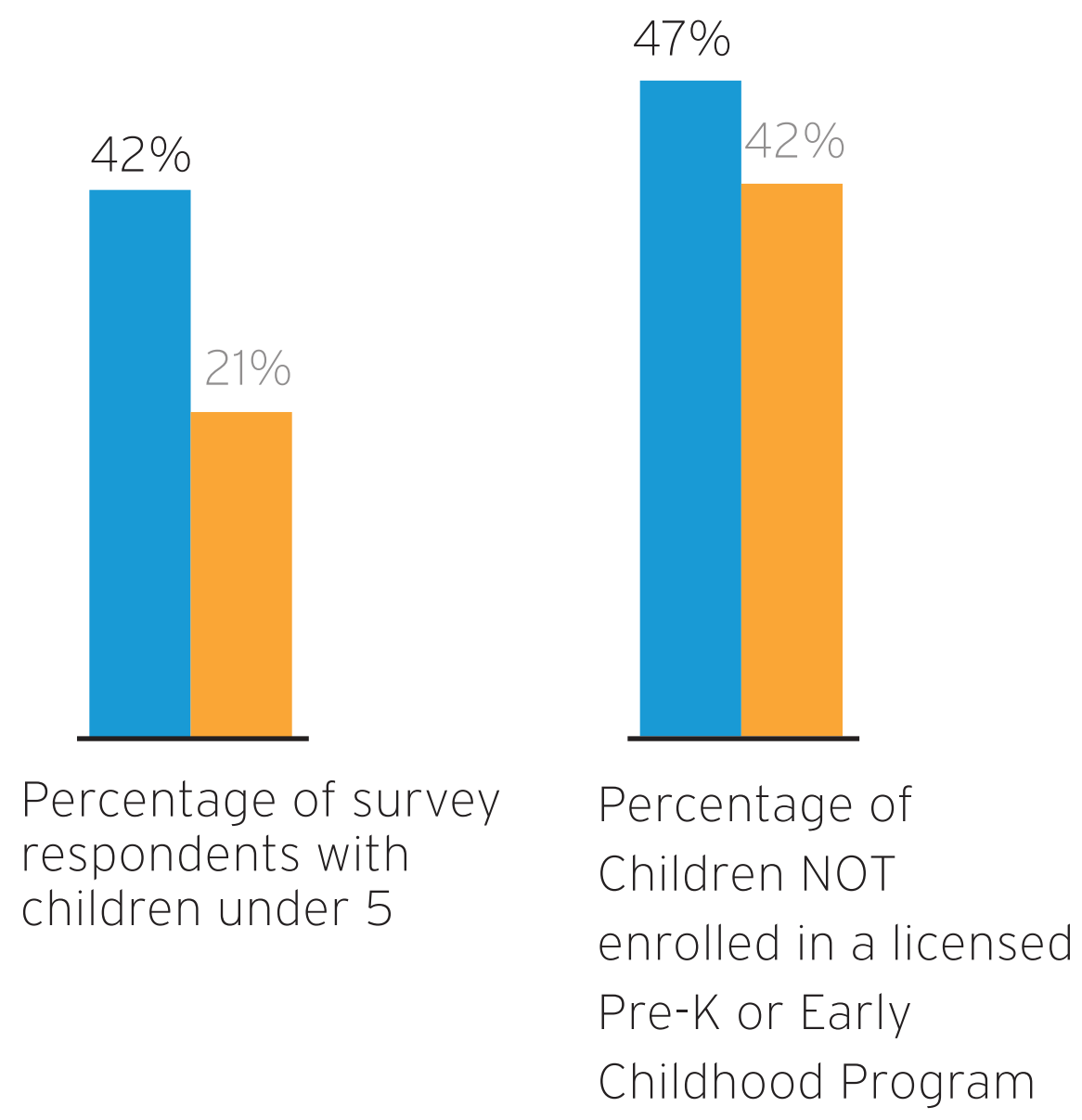


WHAT WE HEARD.

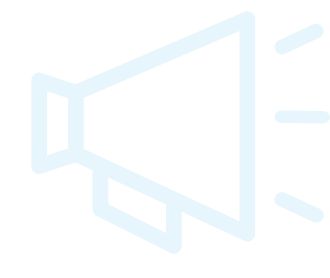
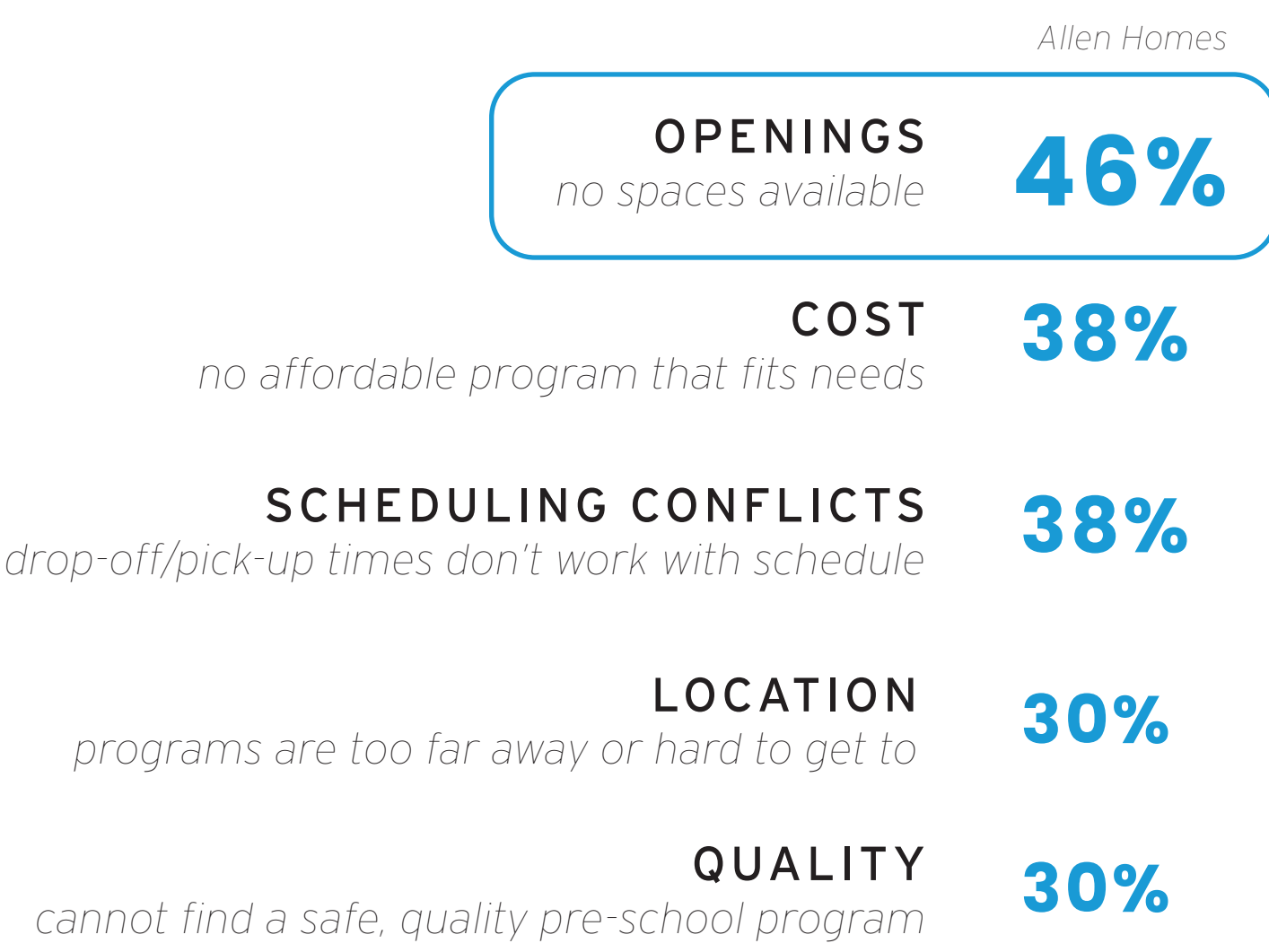
ASSETS & NEEDS ASSESSMENT SURVEY RESULTS

Allen Homes Neighborhood Survey

CHILDREN AND EARLY EDUCATION



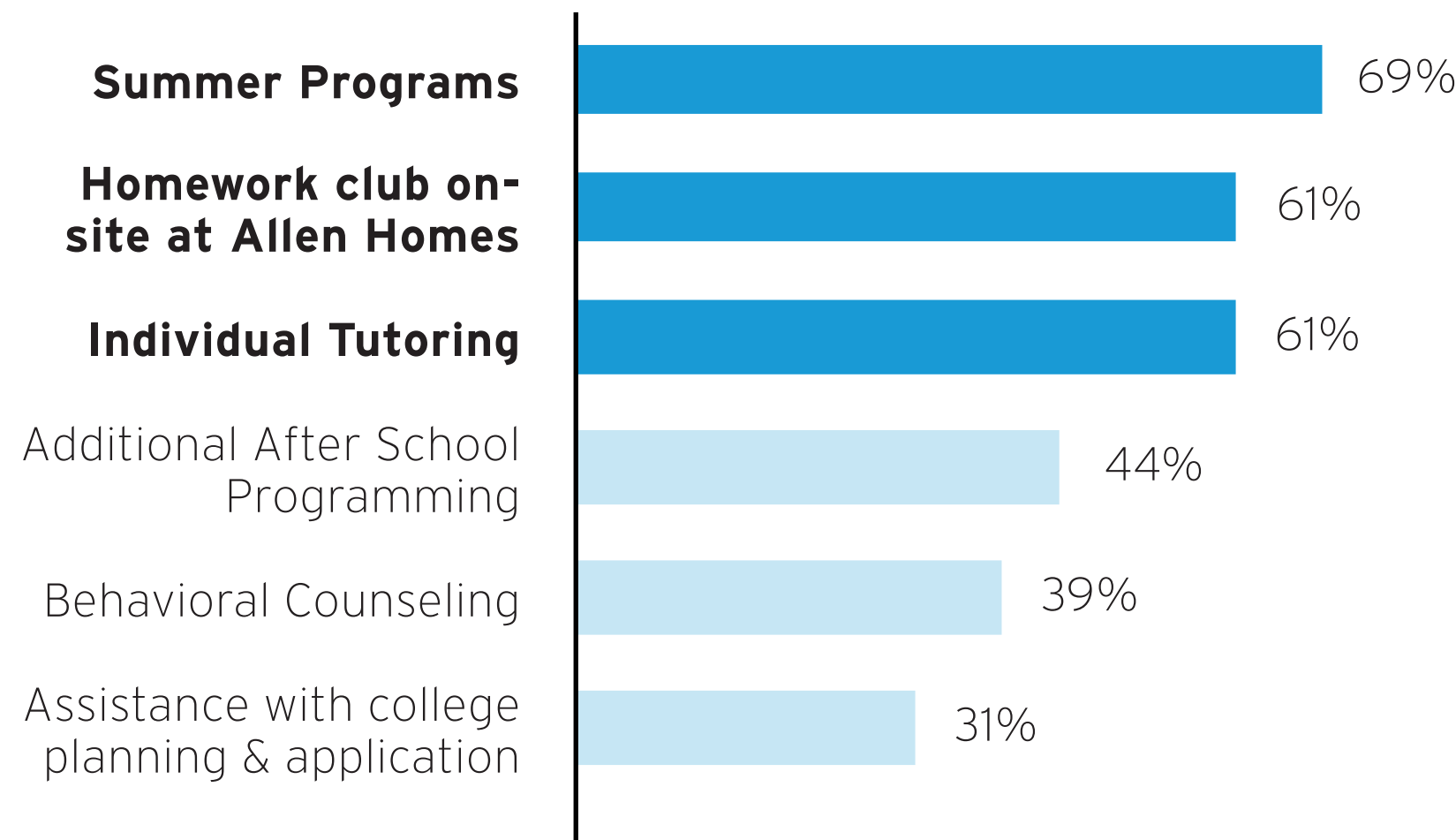
"WHAT ARE SOME REASONS YOUR CHILDREN DO NOT PARTICIPATE IN A PRE-K OR EARLY CHILDHOOD PROGRAM?"



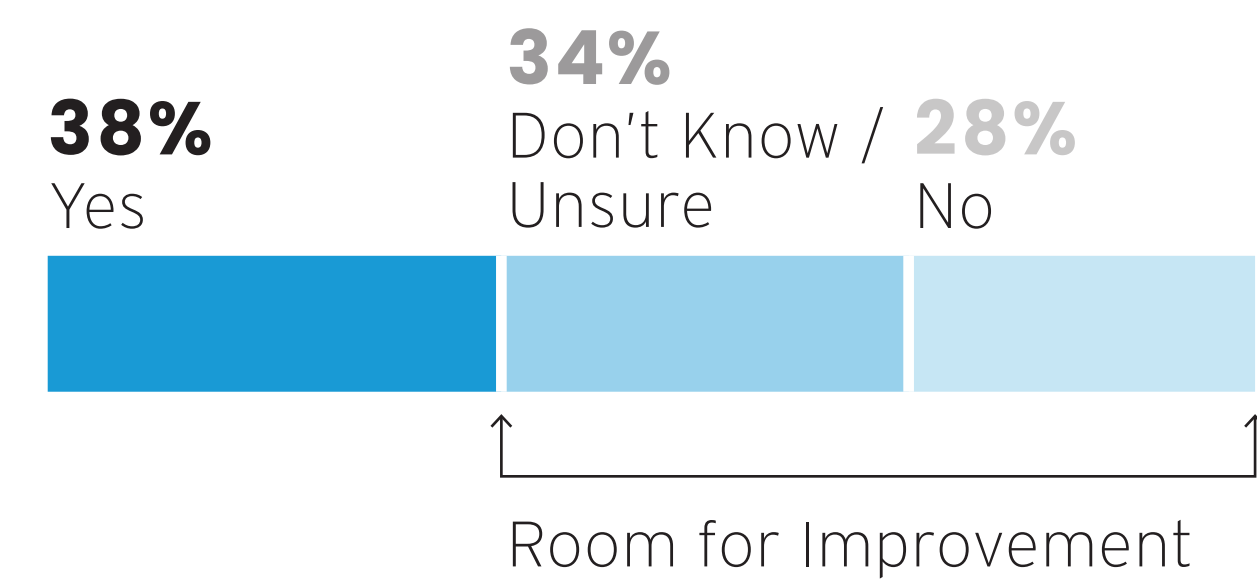
WHAT CAN WE DO TO INCREASE ENROLLMENT IN PRE-K OR EARLY CHILDHOOD PROGRAMS?

WHAT DO YOU THINK?

"WHAT ADDITIONAL SERVICES WOULD HELP YOUR CHILD(REN) DO WELL IN SCHOOL?"

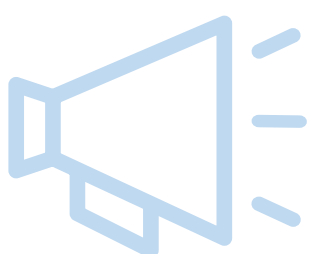


DO YOU FEEL YOUR CHILDREN'S CURRENT SCHOOLING IS PREPARING HIM/HER TO ACHIEVE THEIR AFTER HIGH SCHOOL PLANS?



IF YOU HAVE SCHOOL-AGED CHILDREN, WHERE DO THEY GO TO SCHOOL?

INSIDE Choice Neighborhood	OUTSIDE Choice Neighborhood
VOTE	VOTE



WHAT PROGRAMS WOULD HELP YOUR KIDS STAY ON TRACK IN SCHOOL?

For Kids In Pre-K / Early Head Start

For Kids in K-12

To be College and/or Career-Ready?

WHAT DO YOU THINK?

WHAT DO YOU THINK?

WHAT DO YOU THINK?



HEALTH

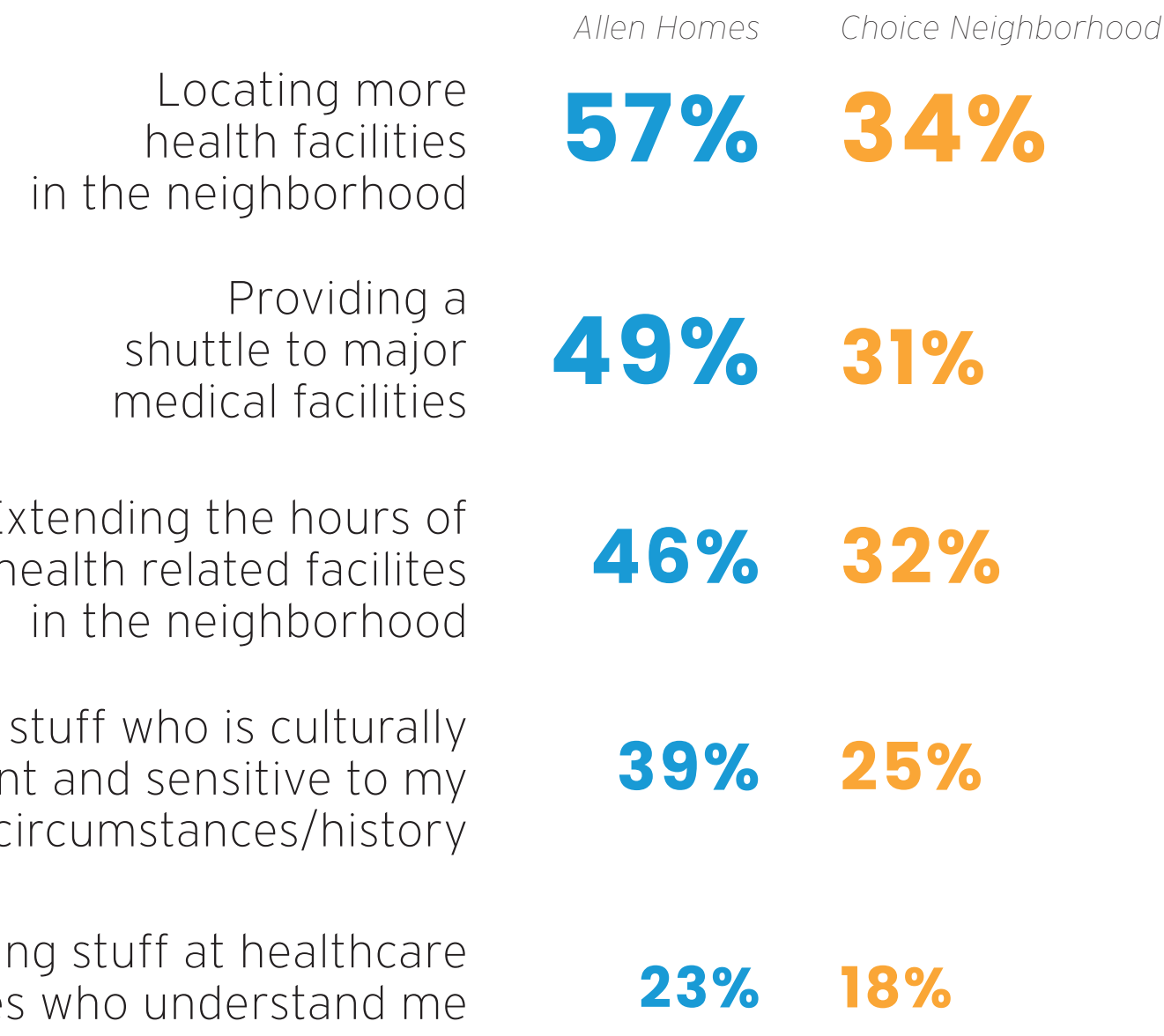
How can we create a healthier community?





WHAT WE HEARD.

ASSETS & NEEDS ASSESSMENT SURVEY RESULTS

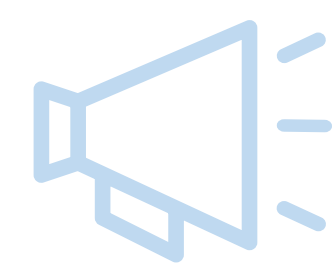
"HOW COULD YOUR ACCESS TO QUALITY HEALTHCARE BE IMPROVED?"



 Allen Homes
 Neighborhood Survey

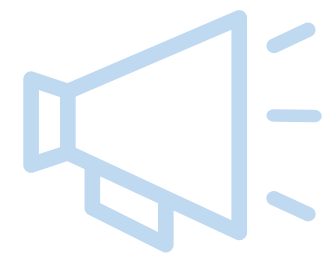
Allen Homes residents feel these health services are needed in the neighborhood:

- Physical Therapy
- Reproductive health/OB-GYN services
- Mental Health
- Behavioral health



WHAT HEALTH/WELLNESS SERVICES DO YOU FEEL ARE MOST NEEDED IN THE NEIGHBORHOOD?

Primary Care Doctor	Dental Care	Vision Care / Eye Doctor
VOTE	VOTE	VOTE
Urgent Care / Emergency Room	Reproductive Health / OBGYN	Domestic Violence Resources
VOTE	VOTE	VOTE
Pharmacy	Mental + Behavioral Health Services	Trauma Support Services
VOTE	VOTE	VOTE
Physical Therapy	Substance Abuse / Addiction Support	Other Ideas?
VOTE	VOTE	WHAT DO YOU THINK?



WHAT ARE SOME WAYS THAT YOU FEEL WE COULD GET MORE PEOPLE USING THE SERVICES AT THE MEDICAL COLLEGE CAMPUS?

pick your top 3

Shuttles	Health Fairs on Campus	Wellness Series with Community Center Partners
VOTE	VOTE	VOTE
More Welcoming Street Presence towards the Campus	Welcome Center + Concierge for Local Residents	"Community Navigators" to help guide residents to available resources
VOTE	VOTE	VOTE
DO YOU HAVE ANY OTHER IDEAS?		
WHAT DO YOU THINK?		



EMPLOYMENT

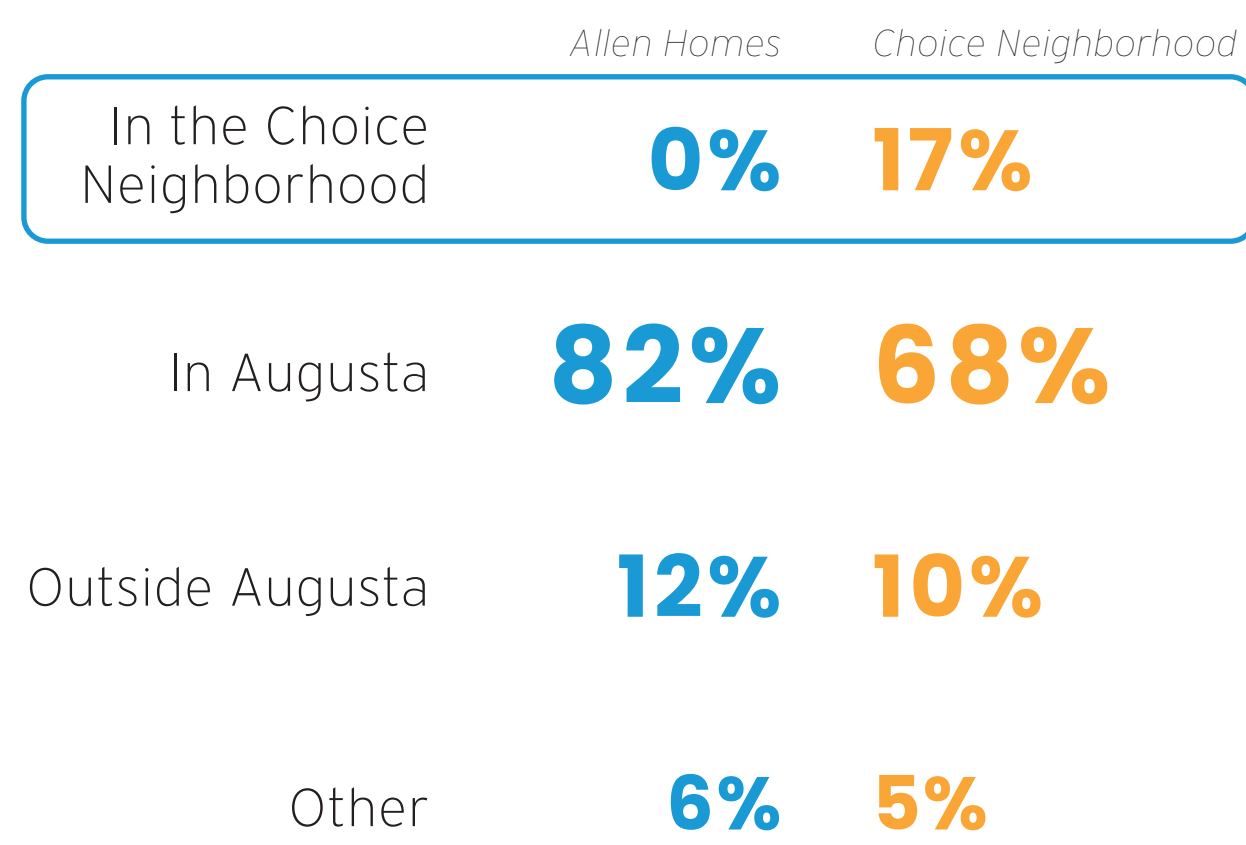
How can we help residents become more self-sufficient?



WHAT WE HEARD.

ASSETS & NEEDS ASSESSMENT SURVEY RESULTS

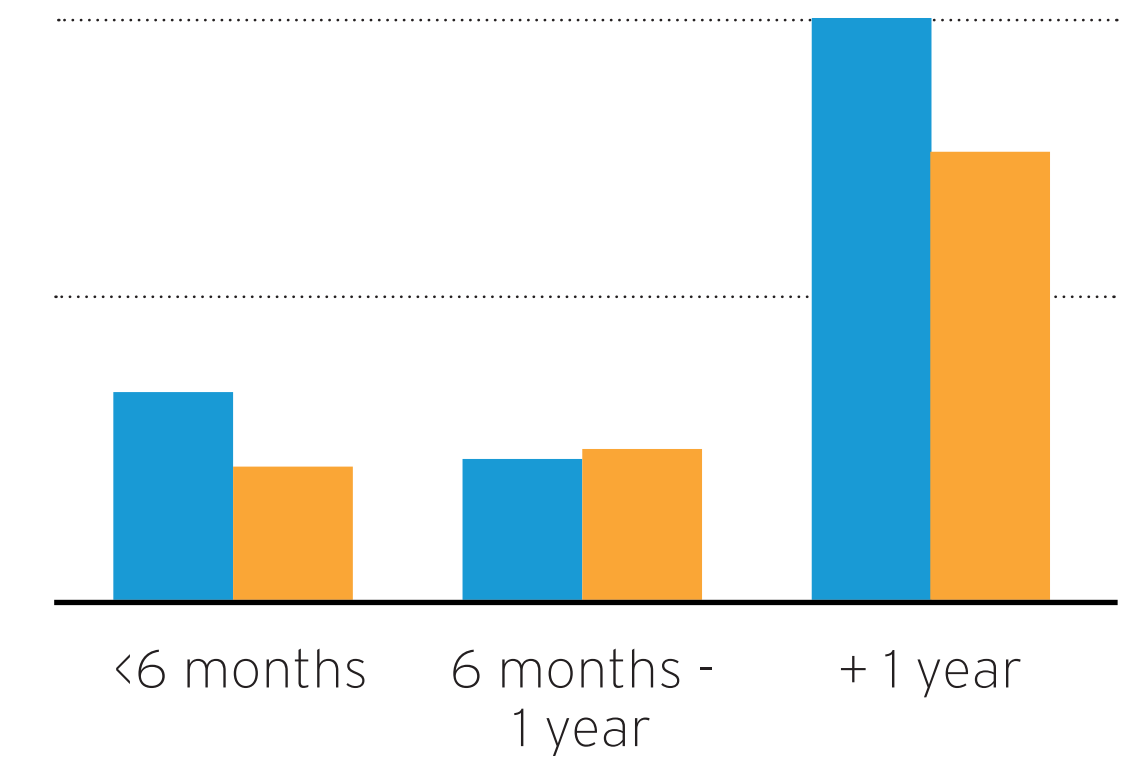
"IF EMPLOYED, WHERE DO YOU WORK?"



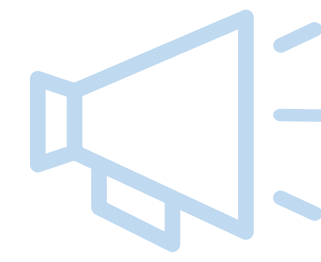
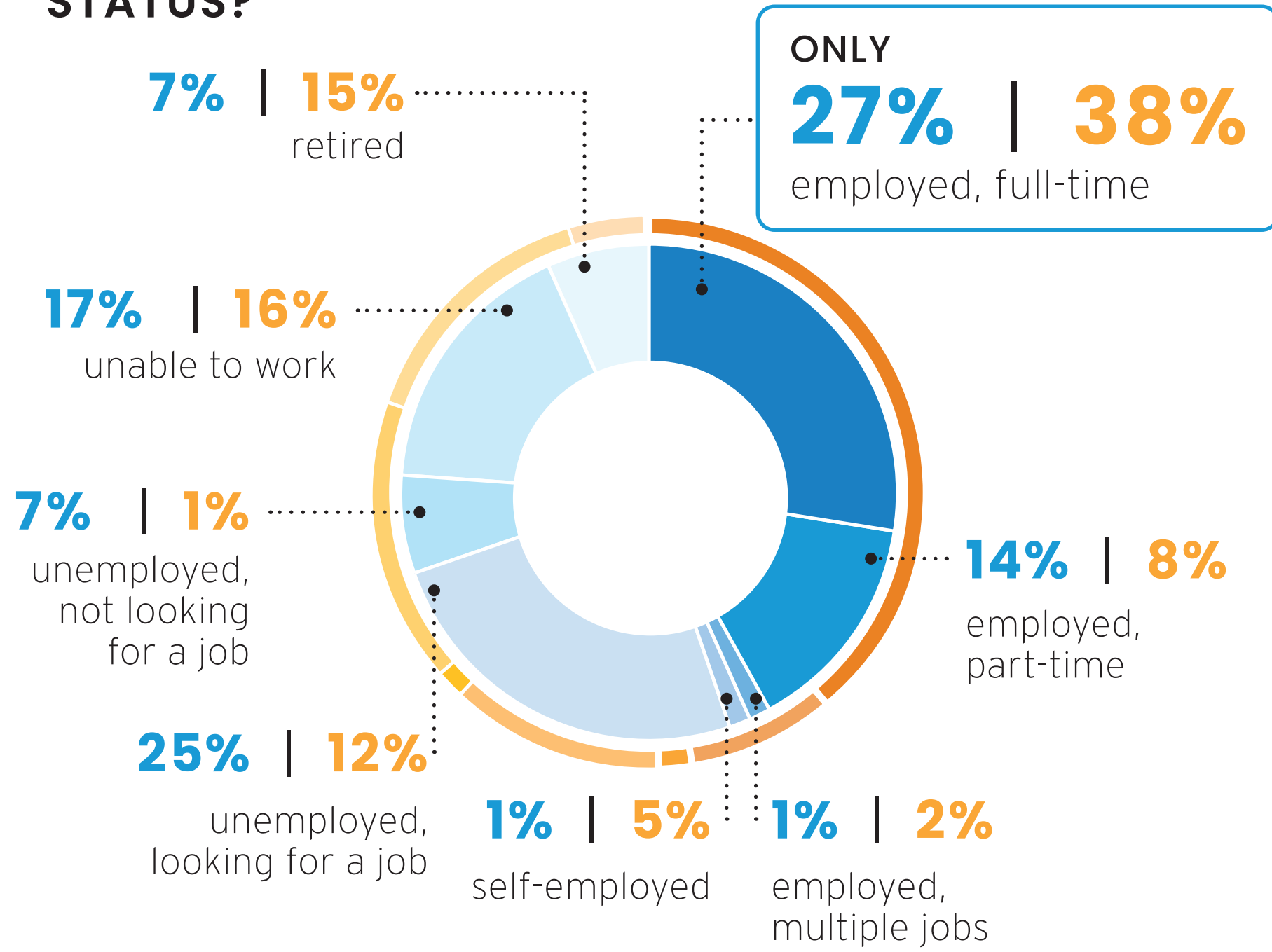
"WHAT DO YOU FEEL ARE SOME OF THE REASONS PEOPLE IN THE NEIGHBORHOOD STRUGGLE TO GET/KEEP A JOB?"

- #1 Not enough transportation to jobs
 - #2 Difficulty finding available jobs
 - #3 Overcoming criminal history and background checks
 - #4 Finding quality or affordable childcare
 - #5 Lacking the skills needed for available jobs
- #1 Lacking the skills needed for available jobs
 - #2 Finding quality or affordable childcare
 - #3 Overcoming criminal history and background checks
 - #4 Not enough transportation to jobs
 - #5 Difficulty Finding Available Jobs

"IF UNEMPLOYED, HOW LONG HAS IT BEEN SINCE YOU HAD A JOB?"

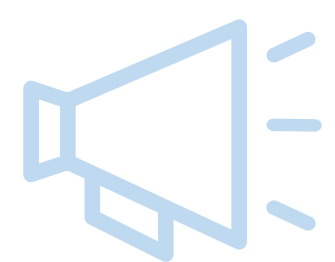


"WHAT IS YOUR CURRENT EMPLOYMENT STATUS?"



WHAT PROGRAMS OR SERVICES WOULD GIVE YOU OR YOUR FAMILY MEMBERS THE SKILLS NEEDED FOR JOBS LOCATED IN THE NEIGHBORHOOD?

WHAT DO YOU THINK?



IF YOU WORK OUTSIDE THE CHOICE NEIGHBORHOOD, WHAT IMPROVEMENTS COULD HELP YOU GET TO AND FROM YOUR PLACE OF EMPLOYMENT MORE EASILY?

WHAT DO YOU THINK?

WHAT TYPE OF SKILLS-TRAINING OPPORTUNITIES WOULD YOU BE INTERESTED IN?

WHAT DO YOU THINK?

